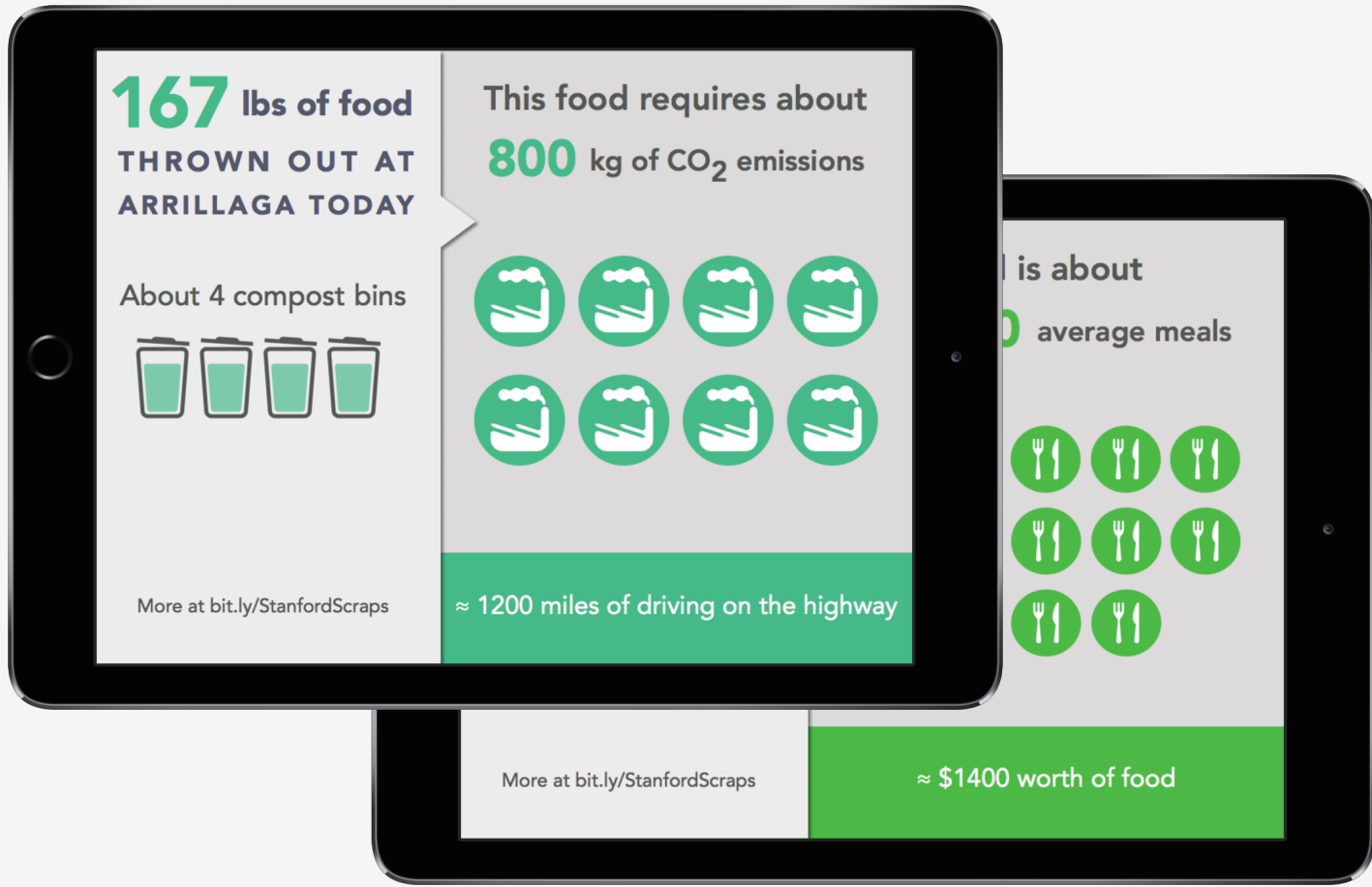


scraps



reducing cafeteria food waste



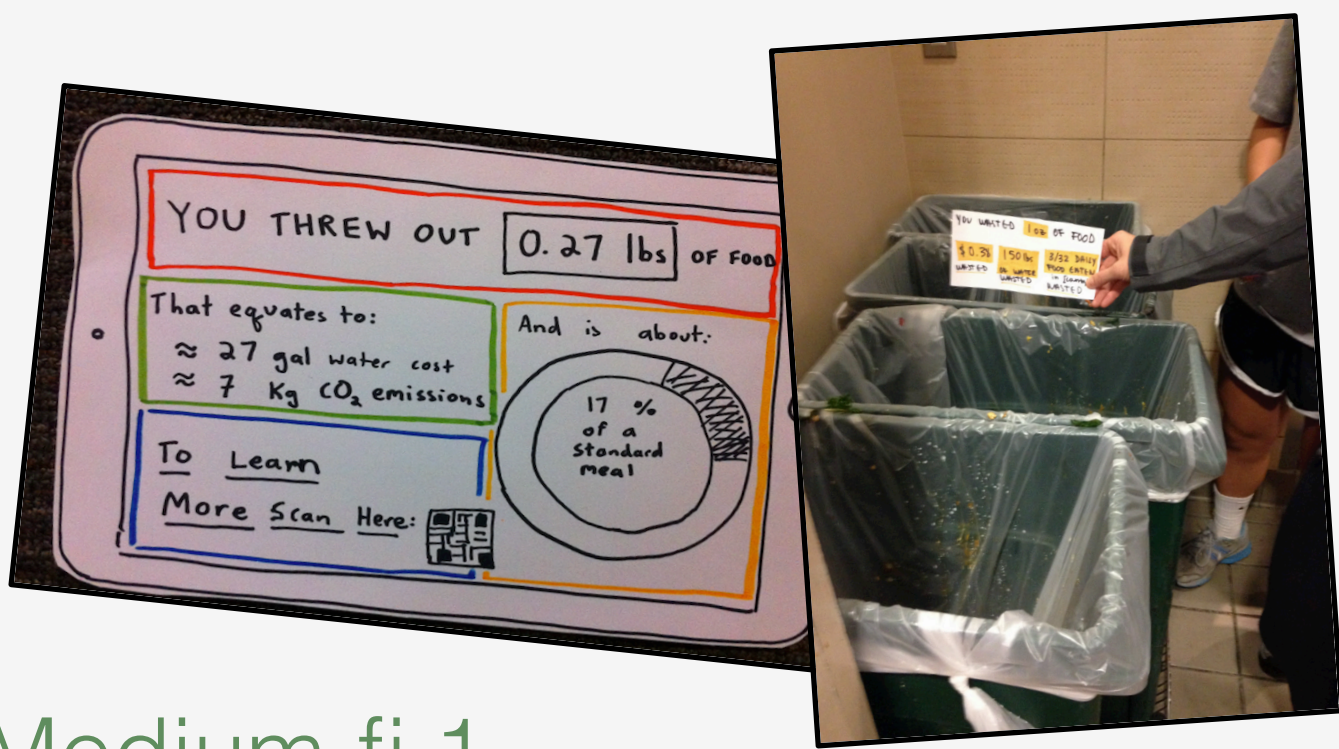
Problem

Stanford dining halls each waste ~240 lbs per meal.

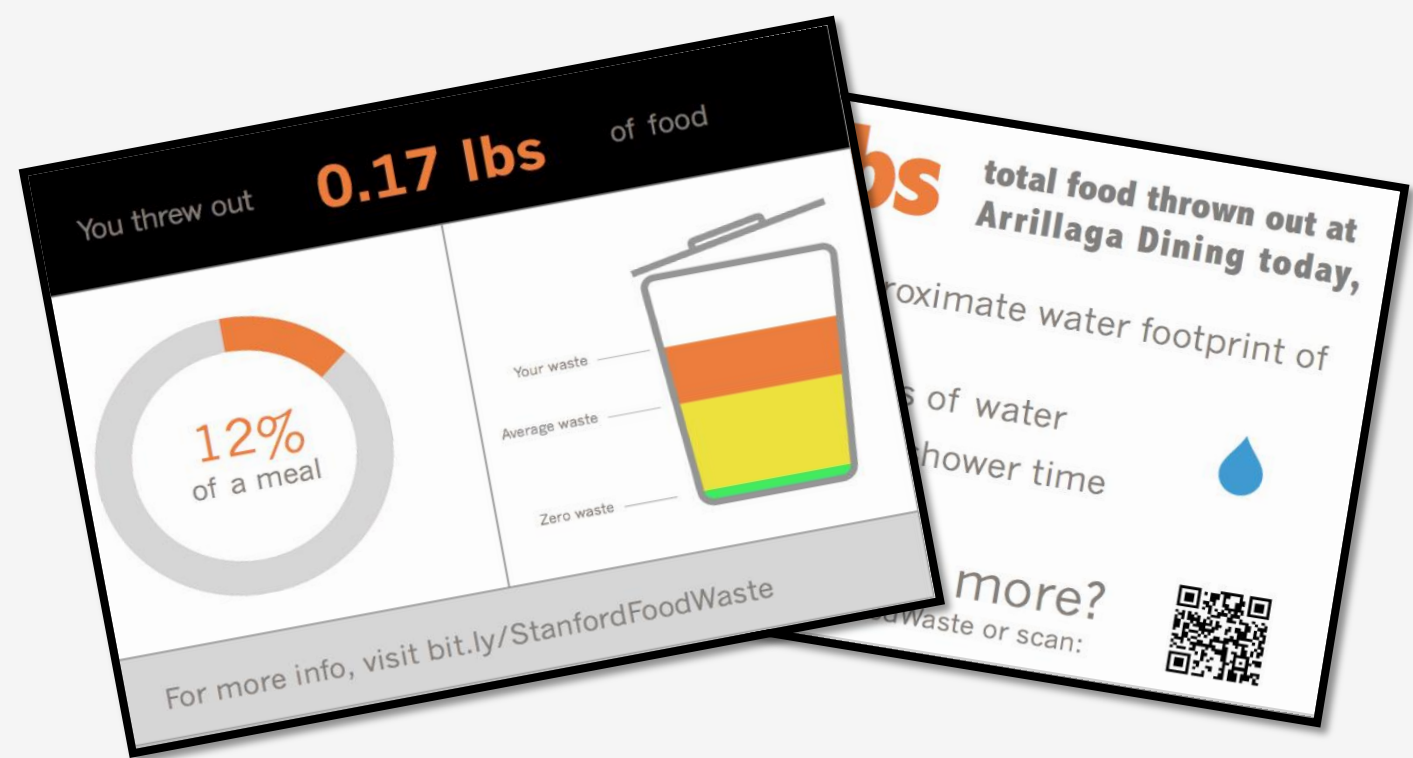
How might we make diners more waste-conscious?

Design process

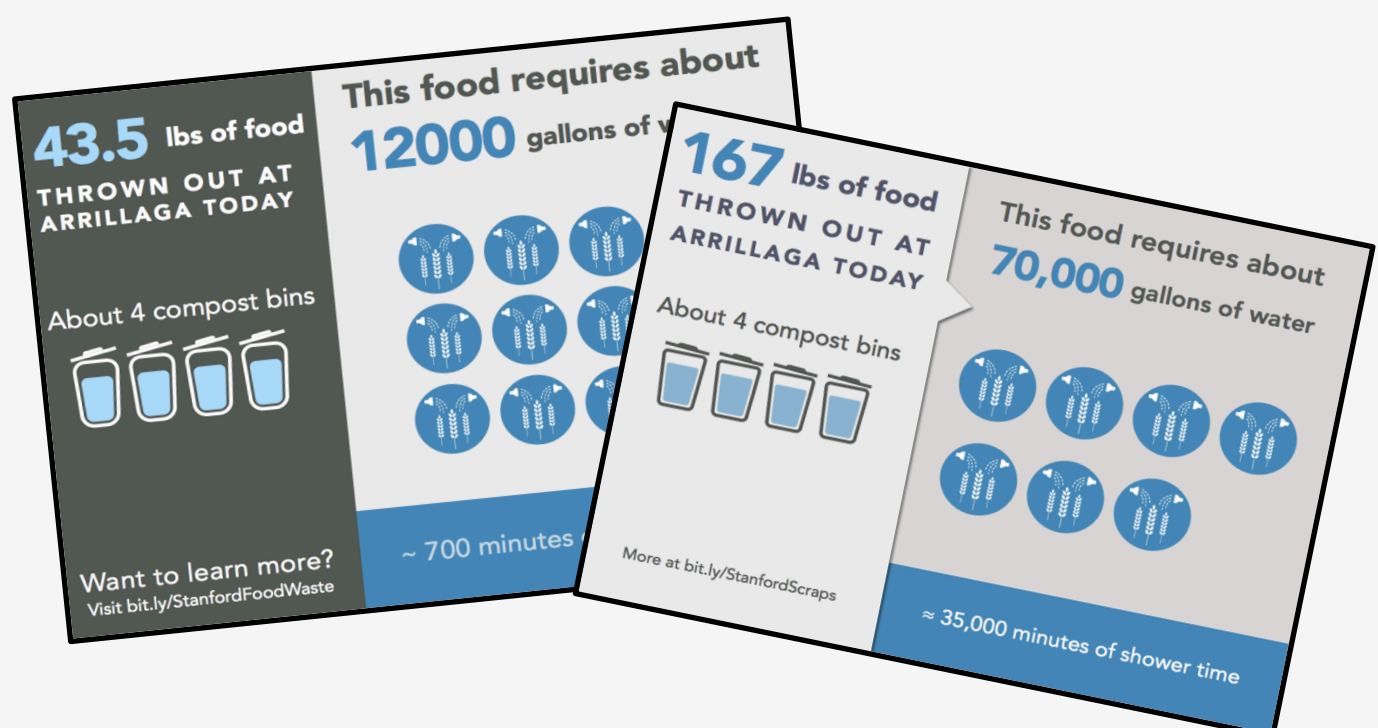
Low-fi



Medium-fi 1



Medium-fi 2

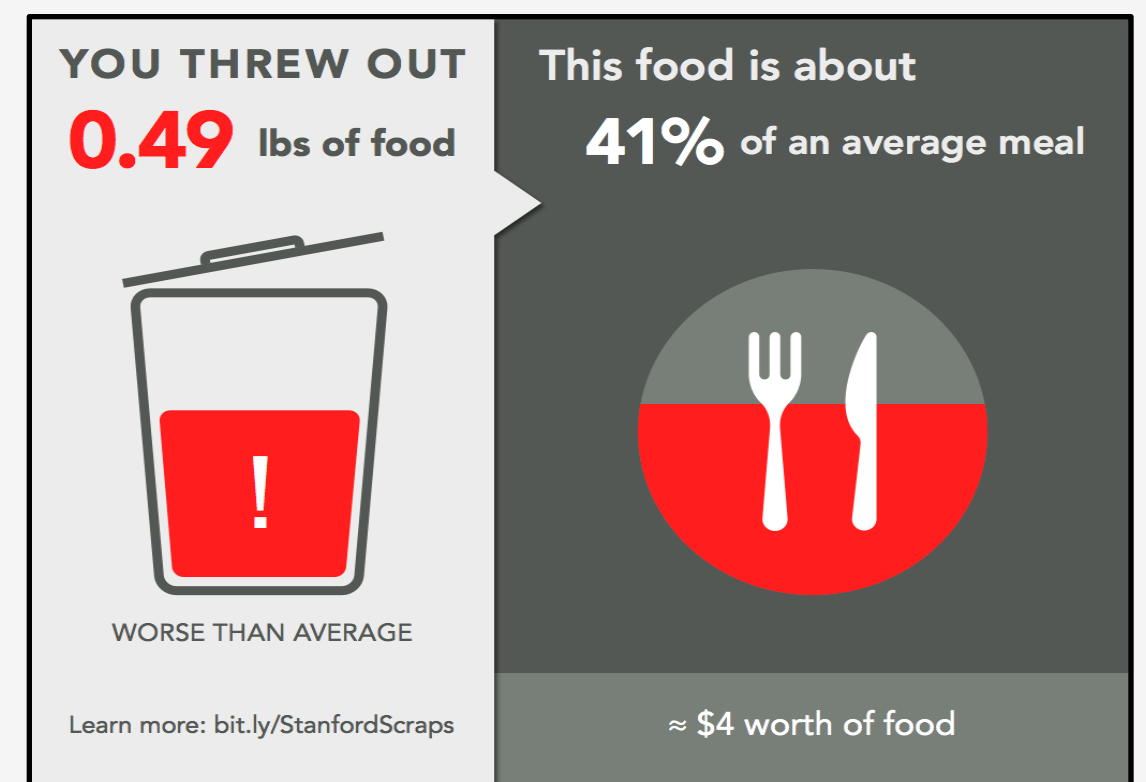


Solution

Display individual and collective amount of food wasted

Real-time updates via wifi-enabled scale under compost bin

Individual waste display at compost bins



Total waste display at buffet counter

