

# Spotter

## Lo-Fi Testing

# Mission Statement

Selected Interface

Lo-Fi Prototype

Methodology

Results

UI Changes

Experienced gym-goers are willing to  
offer help at the gym...

Experienced gym-goers are willing to offer help at the gym...

**But beginners are too intimidated to ask for help.**

Experienced gym-goers are willing to offer help at the gym...

But beginners are too intimidated to ask for help.

**How can we bridge this gap?**

# Our mission

**Empower** beginners to  
seek help at the gym.

Mission Statement

**Selected Interface**

Lo-Fi Prototype

Methodology

Results

UI Changes

# Interface?



# Interface?

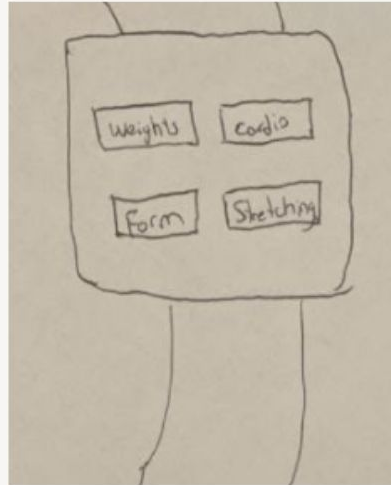


# AR Glasses?

# Interface?



AR Glasses?

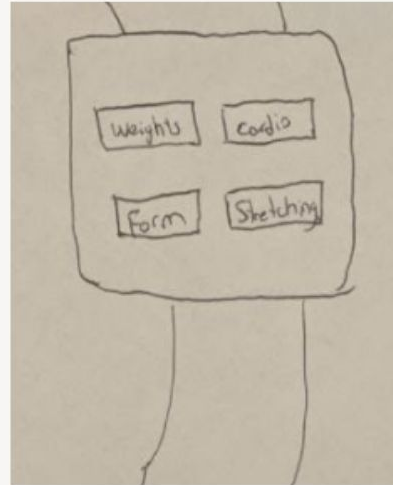


Wearable?

# Interface?



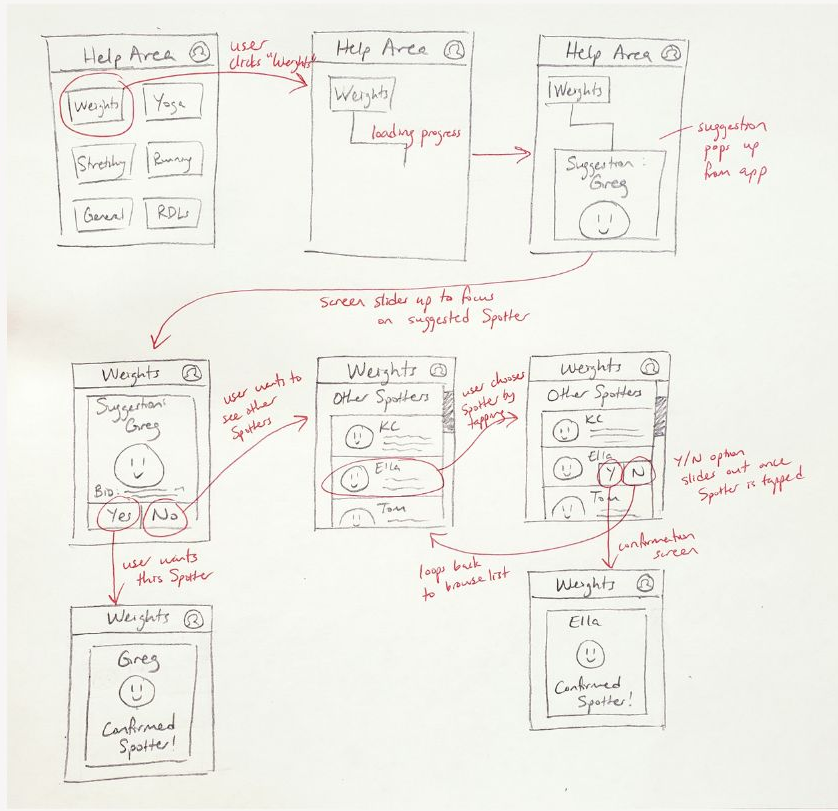
AR Glasses?



Wearable?



Mobile?



# Mobile!

## Accessible

## See more info

## Inconspicuous

Mission Statement

Selected Interface

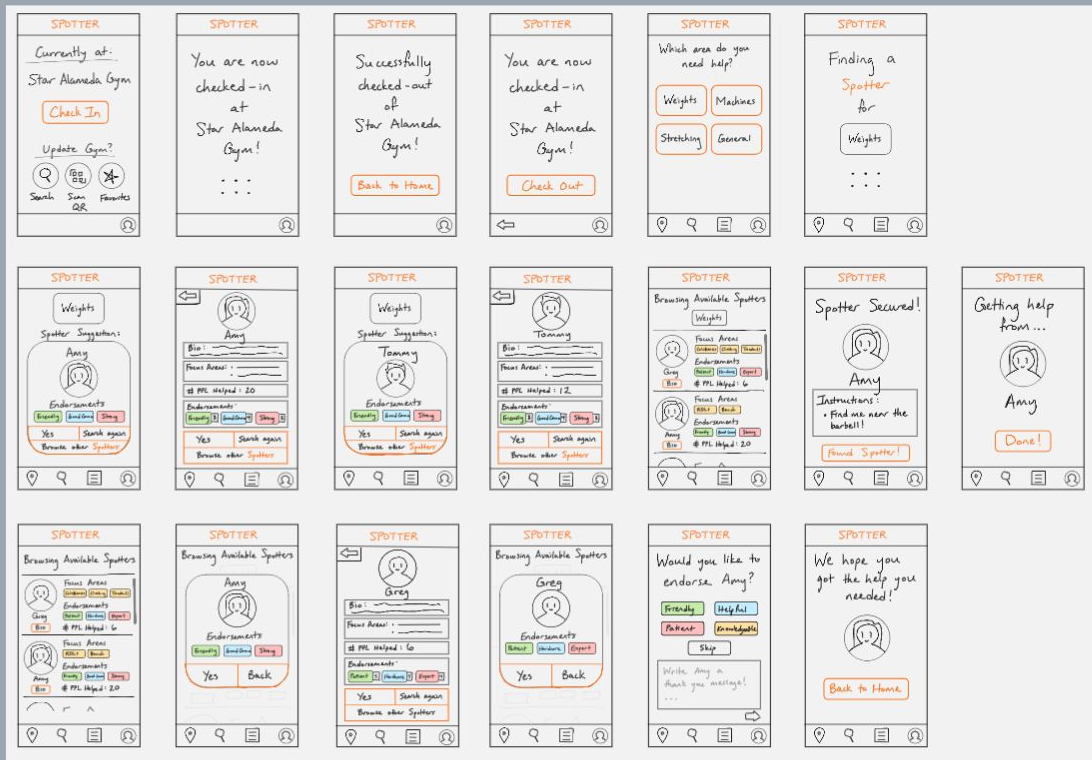
**Lo-Fi Prototype**

Methodology

Results

UI Changes

# Lo-Fi Prototype

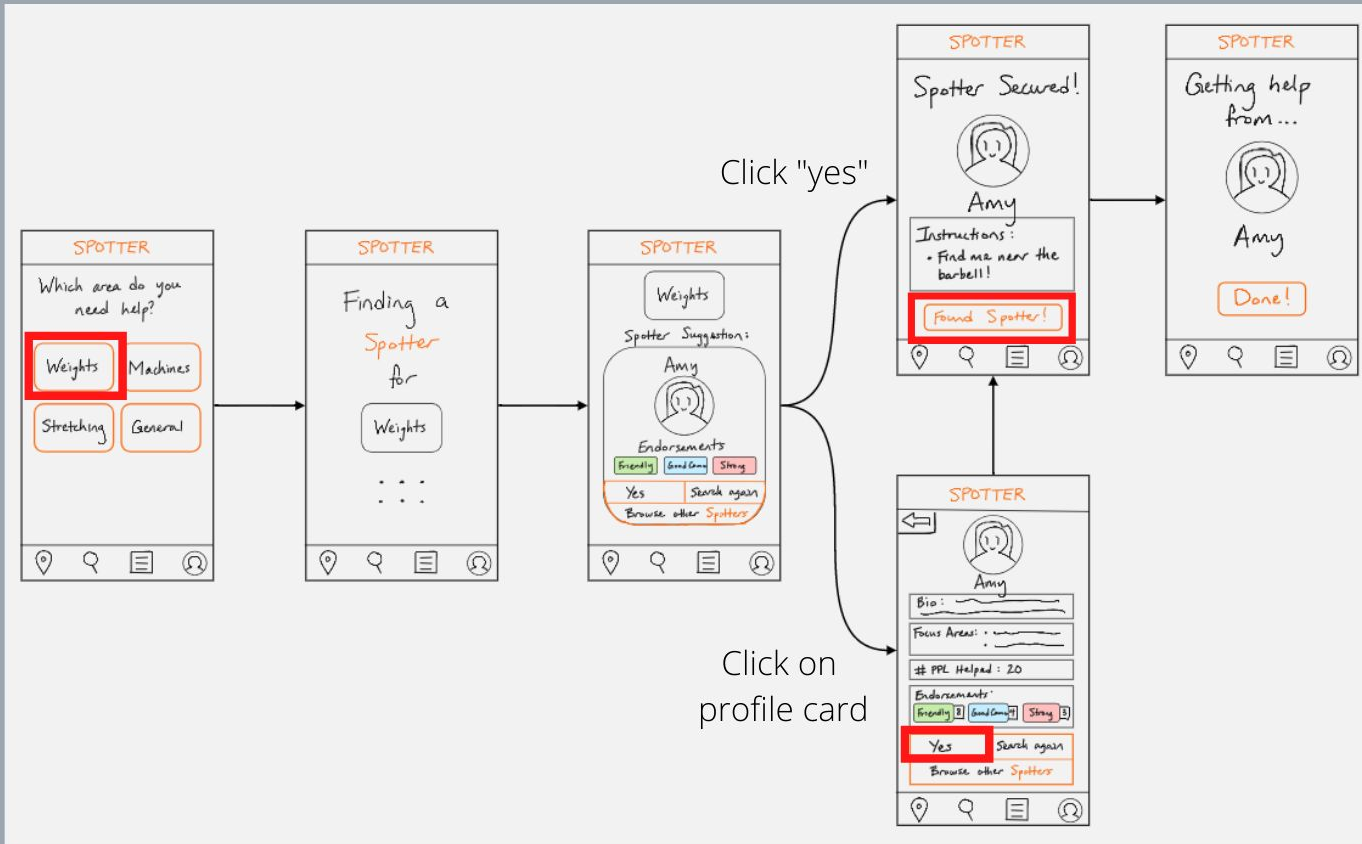


- MarvelPOP
- Phone Interface
- Minimize swiping/typing

# Task 1

**Find a Spotter at the  
gym**

# Task 1: Find a Spotter at the gym

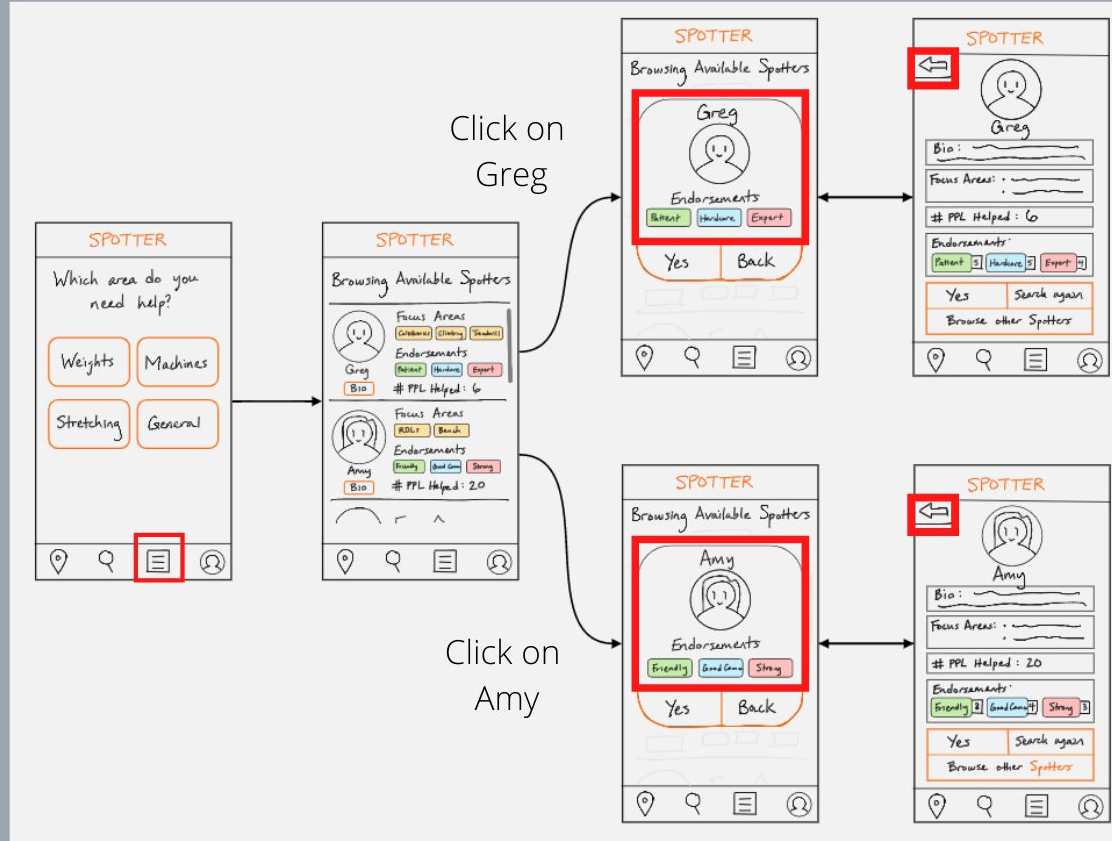




# Task 2

**Browse through  
different Spotters**

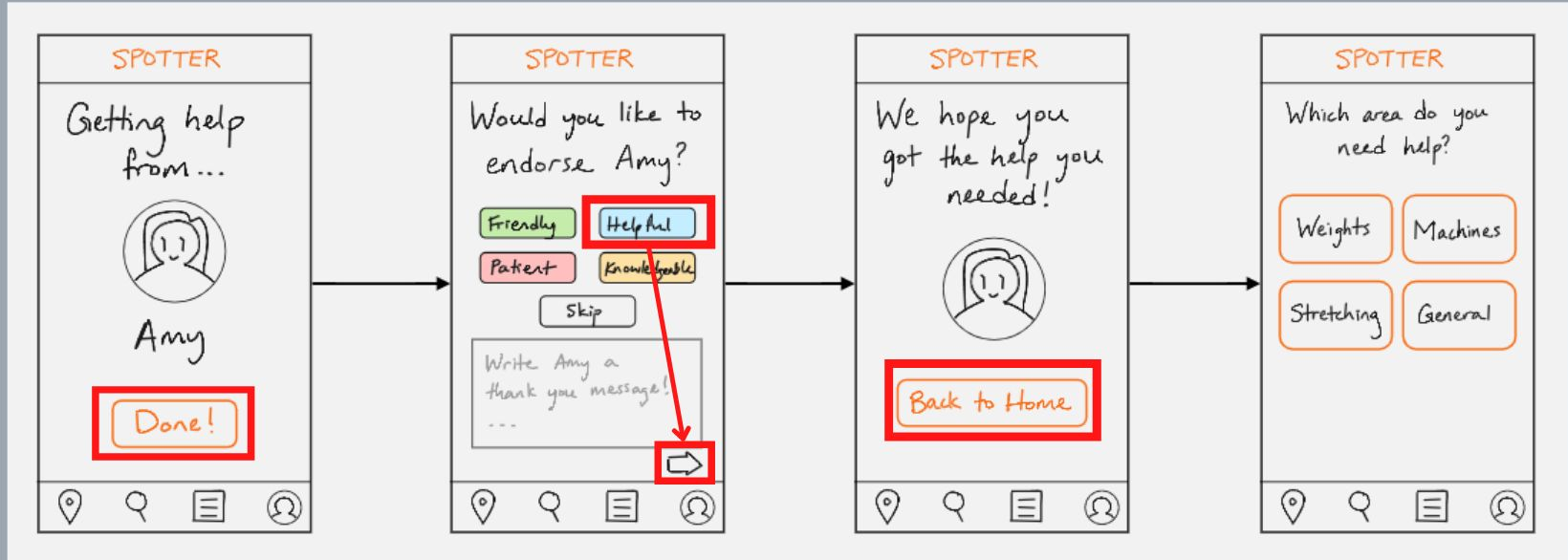
# Task 2: Browse through different Spotters



# Task 3

**Endorse a Spotter**

# Task 3: Endorse a Spotter



Mission Statement

Selected Interface

Lo-Fi Prototype

**Methodology**

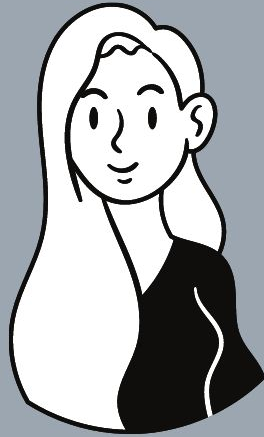
Results

UI Changes

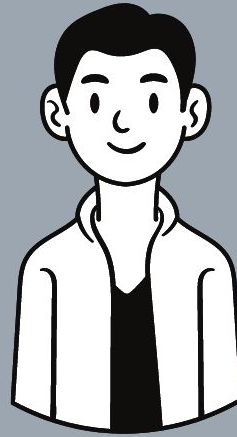
# Participants



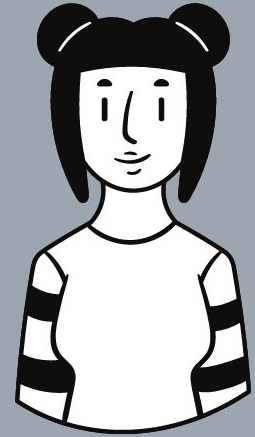
Has **never**  
been to the  
gym



Been to the  
gym **less than**  
**10 times**



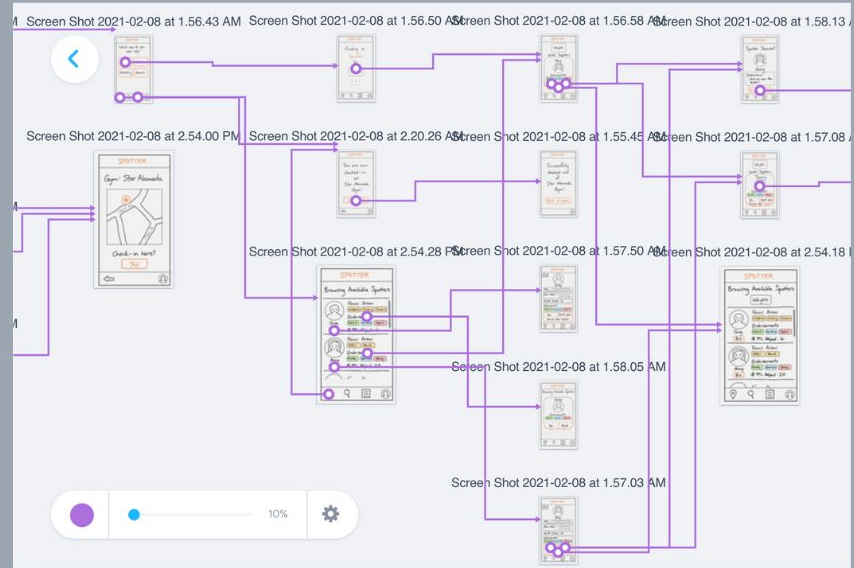
Goes to the  
gym  
**infrequently**



Goes to the  
gym  
**regularly**

# Methodology

- Simulate gym environment
- Mini task before actual task to prep
- Analyze task flows



Mission Statement

Selected Interface

Lo-Fi Prototype

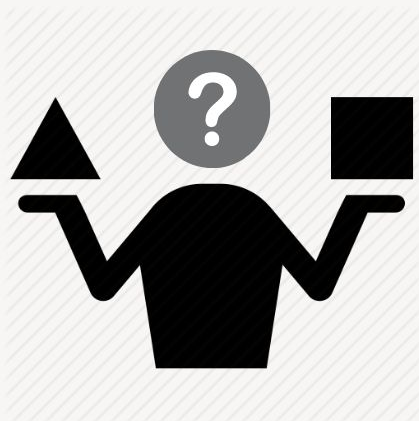
Methodology

**Results**

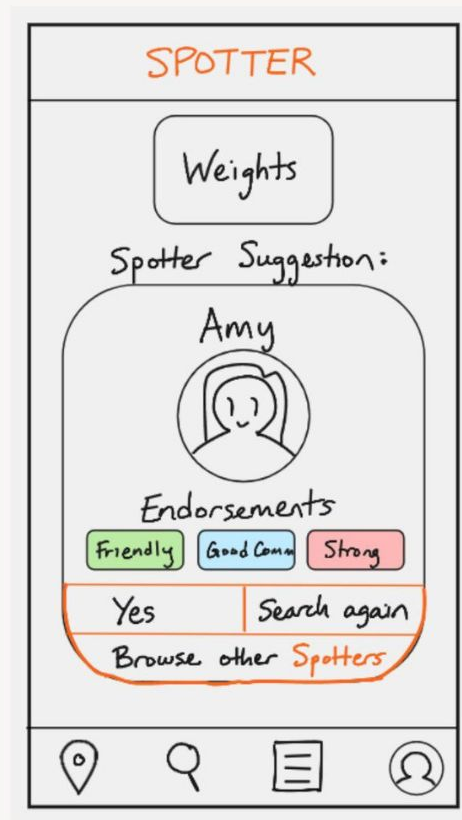
UI Changes



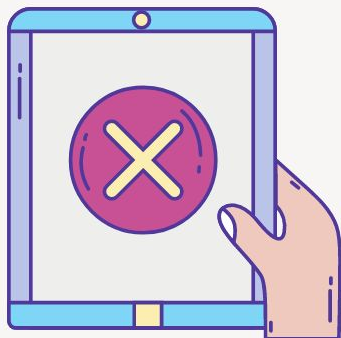
# Results: Errors



"Search again" vs.  
"Browse other spotters"  
unclear



# Results: Errors



Navigation bar  
confusing



Check-in

Browse

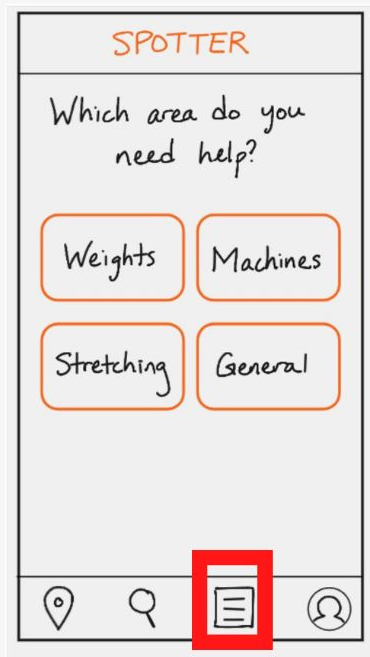
Profile

Find a Spotter

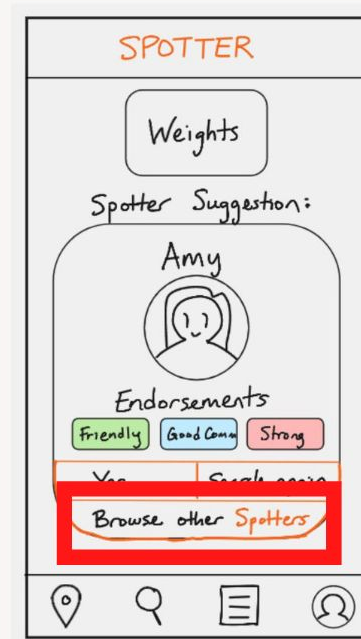
# Results: Errors



Took roundabout way to browse spotters



VS.



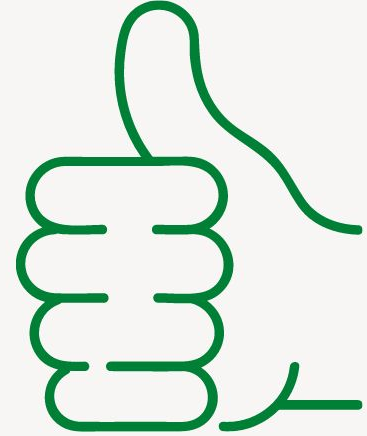
# Results: Successes



Intuitive to find  
Spotters



Excited to browse  
through Spotters



"Very cool -- would use  
at the gym"

Mission Statement

Selected Interface

Lo-Fi Prototype

Methodology

Results

**UI Changes**

# UI Changes

- Make navigation bar more **intuitive**
- Understand **when** do users want to browse
- Add a more centralized home page to **ground** the user

"Will this achieve our mission of  
empowering beginners at the gym?"