

Pathways



Empowering Students Forward

Meet the Team



Gray W.



Pao T.



Mamadou D.



Mission Statement:

Pathways aims to empower and equip students with the tools needed to take charge of the college application process, and ready to give back to others seeking help during the process.



Value Proposition

“Empowering students forward” conveys our mission statement of wanting to propel students forward on their path to college, and aid them in taking charge of their college application process.

Problem:

College is seen as a goal for many students, but the college application process is confusing, complicated, and stressful.

Solution:

An single app that would allow students to 'map' out their college application process and connect them with similar background college students to provide mentorship and guidance.

Our Tasks

1. Create a college roadmap (simple)
2. Match students with a mentor of a similar background (complex)
3. Students should be able to receive feedback and guidance from mentor (medium)

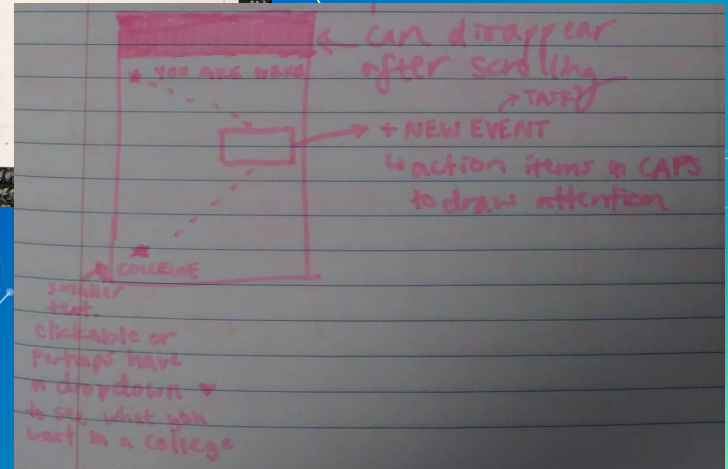
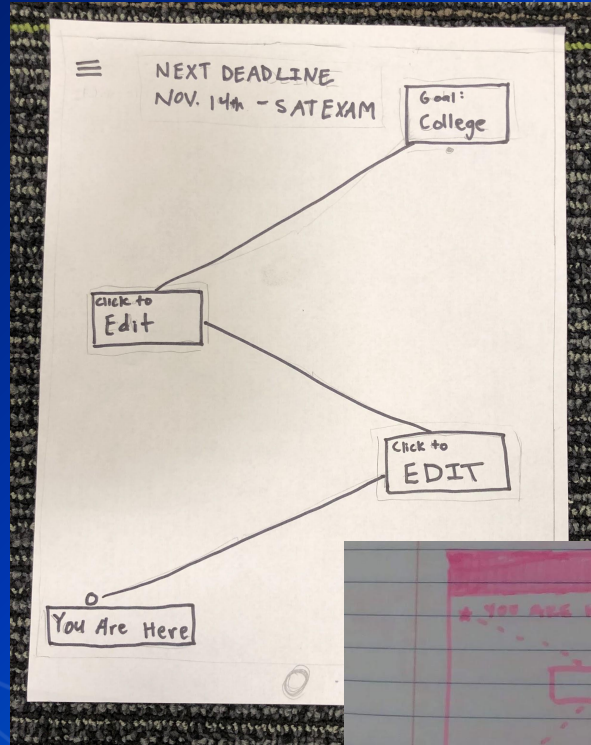
Task 1 Challenge

Before

users were confused about the possibilities of "click to edit" nodes.

After

A single node to edit and change of name to "add task"



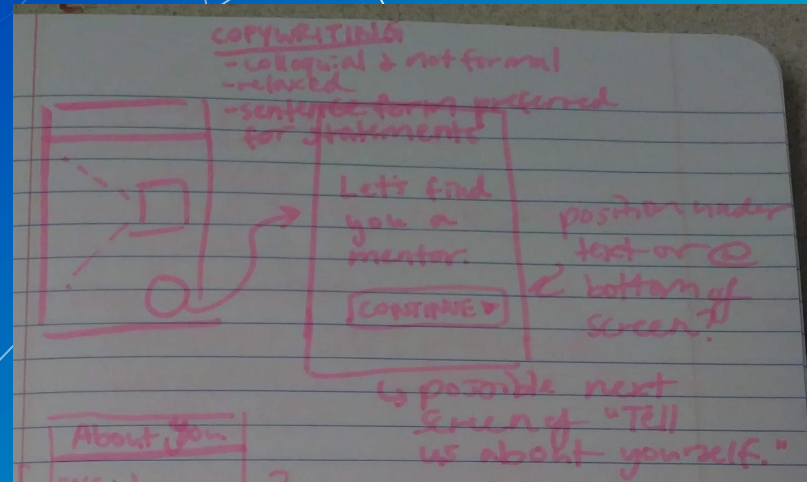
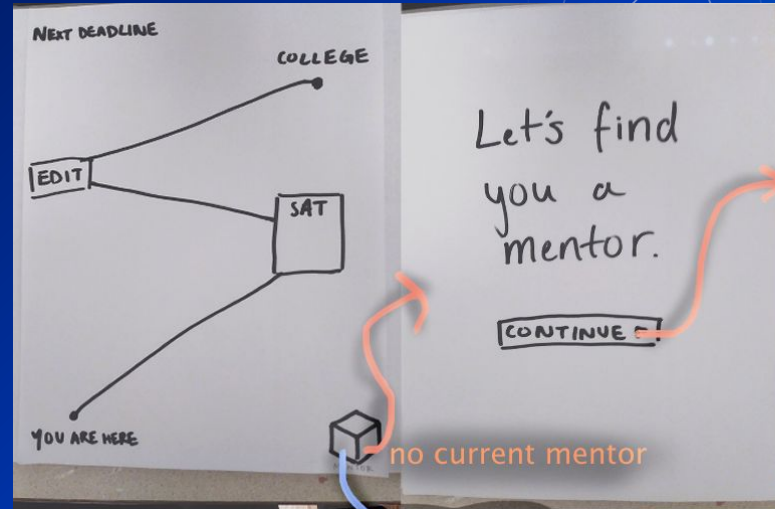
Task 2 Challenge:

Before

users were confused about "mentor" box icon, would click "edit" instead

After

mentor box is clearly labeled and looks very clickable



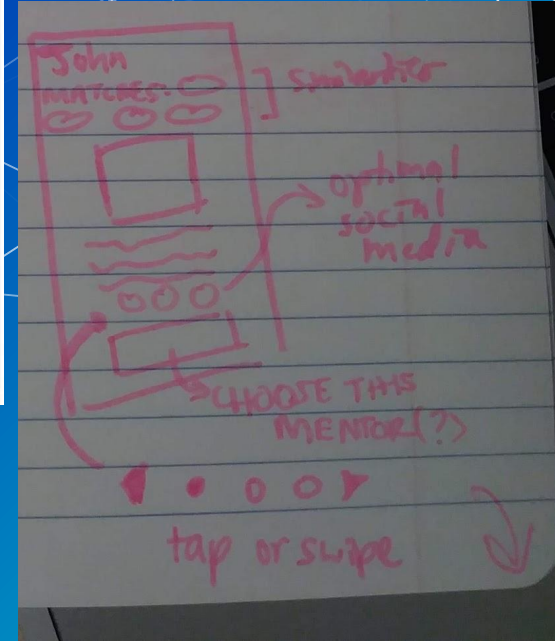
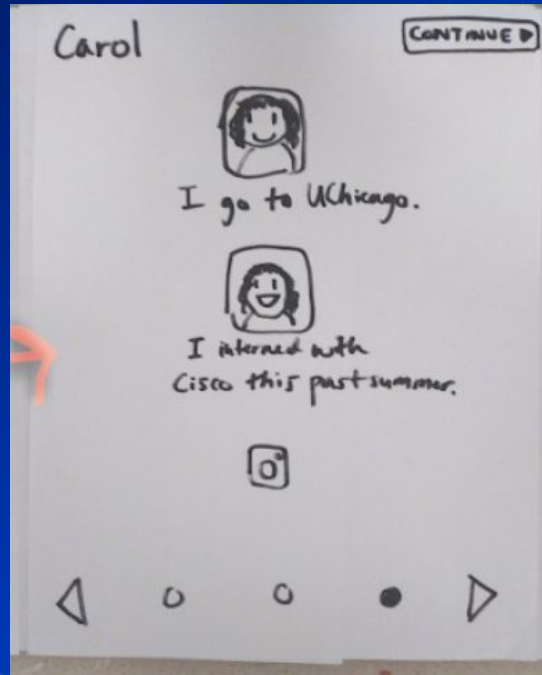
Task 2 Challenge:

Before

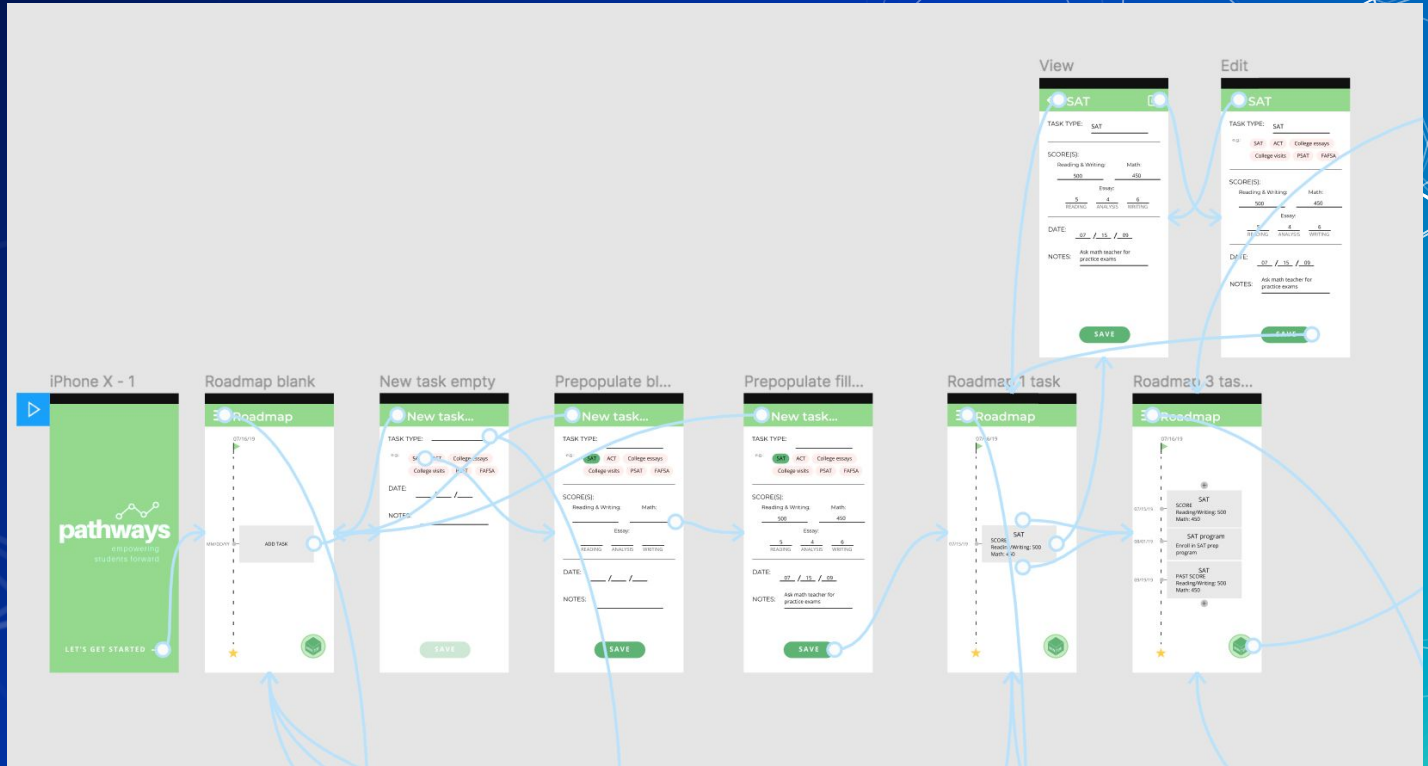
users couldn't differentiate between "clickable" and "submit" buttons

After

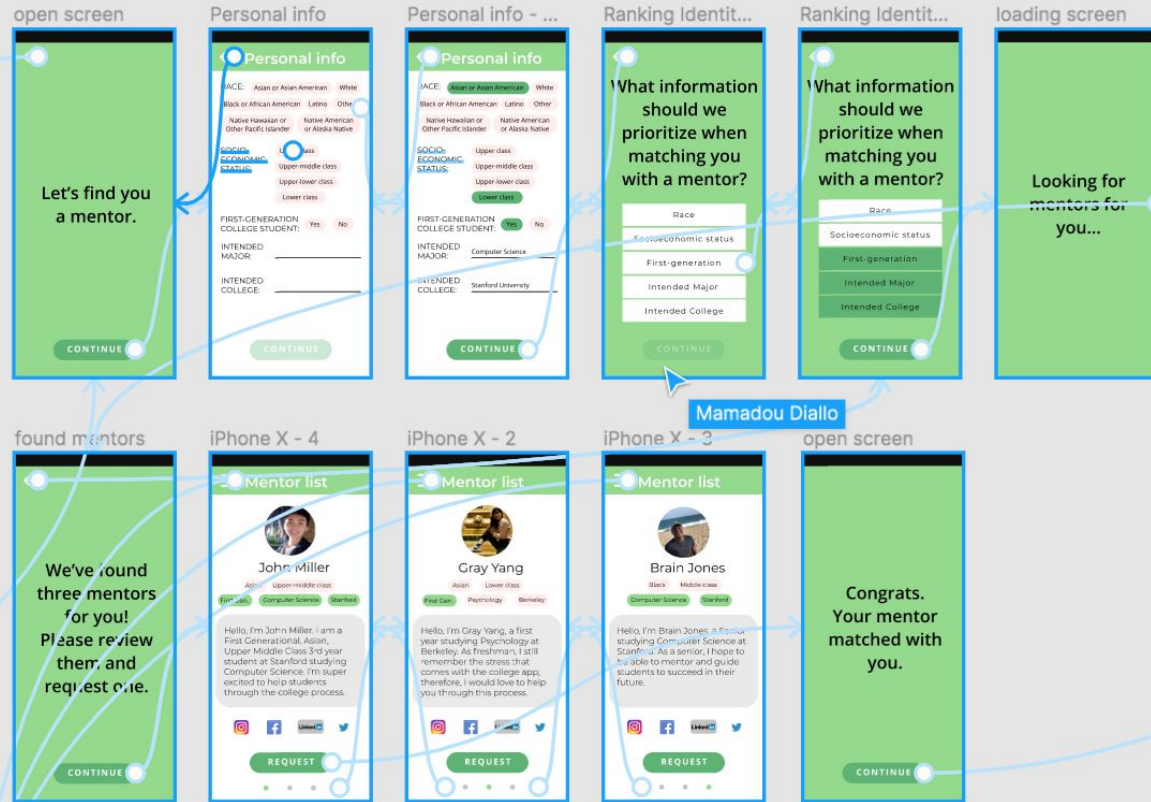
request button is nice, clear and swipe navigation is clean



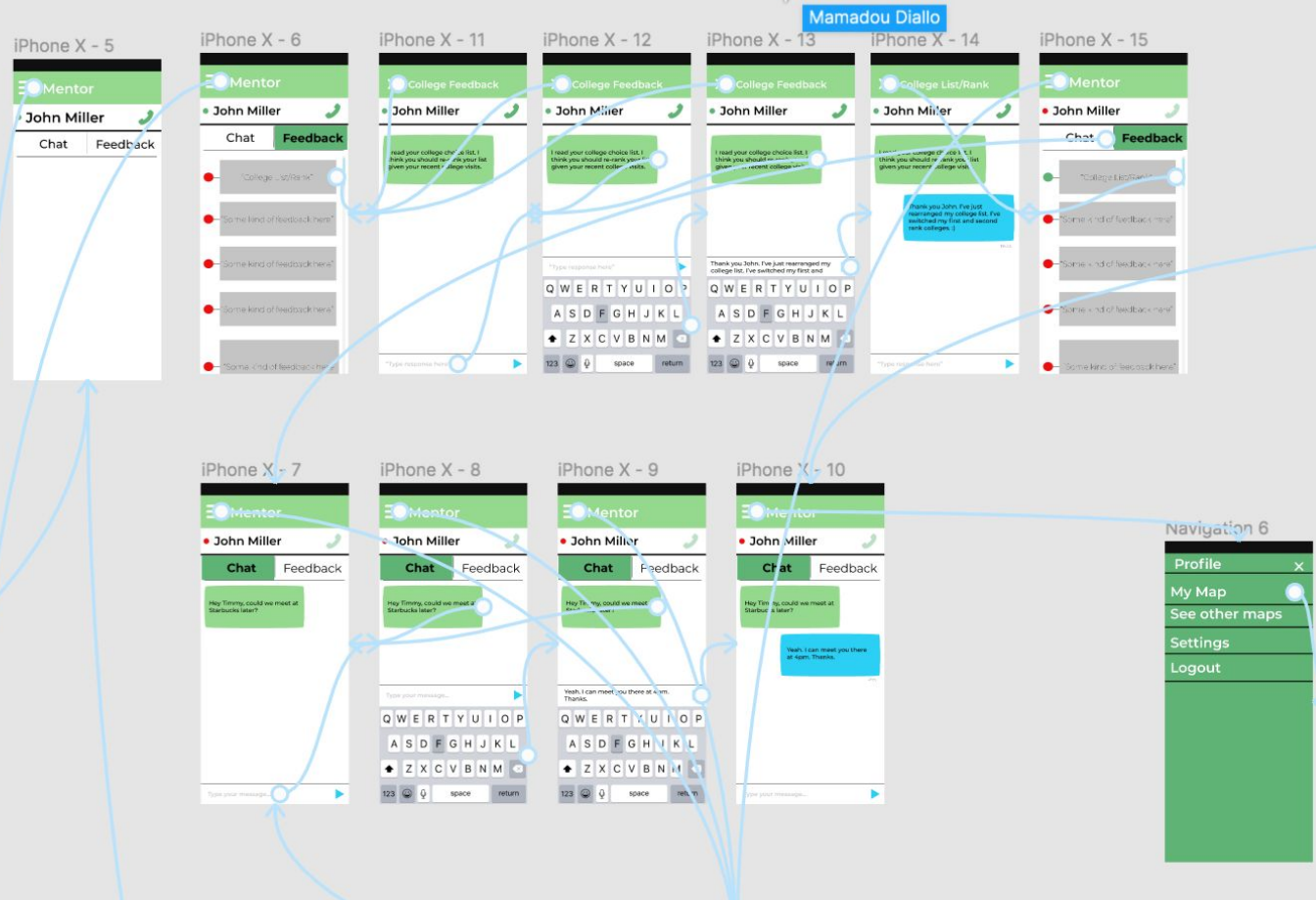
Med-Fi Task 1 Flow:



Med-Fi Task 2 Flow:



Med-Fi Task 2 Flow:



We Used Figma

Helpful

- a. Easy emulation of iPhone X, simulating user finger via clicks
- b. Collaborative nature allowed team to work together efficiently

Unhelpful

- a. Tedious creating an example chat page for mentor/mentee to simulate conversation
- b. Difficult working when we had "all hands online" at the sametime

Limitations/Tradeoffs

- a. Inability to efficiently simulate scrolling views and fancy UI animations.
 - i. For example we were hoping our Roadmap would present as scrollable.
- b. We left out “login” and “settings” screens because we felt like that would have a universally familiar UI interface not worth implementing

Wizard of Oz

Used WOZ technique in order to simulate three mentor related features.

1. Approve mentee request for mentorship
2. Provide feedback
3. Chat with mentee

we had no external hard-coded features

Example WOZ mentor chatting with mentee:



Additional Prototype Screenshots...

