



Homemade Low-fi Prototype

Team 1:
Erin C, Emilia D, Paola M, Amrita V



Outline

Mission Statement

Interface Design

Low-fi Prototype

Task Flows

Usability Testing

Value Proposition

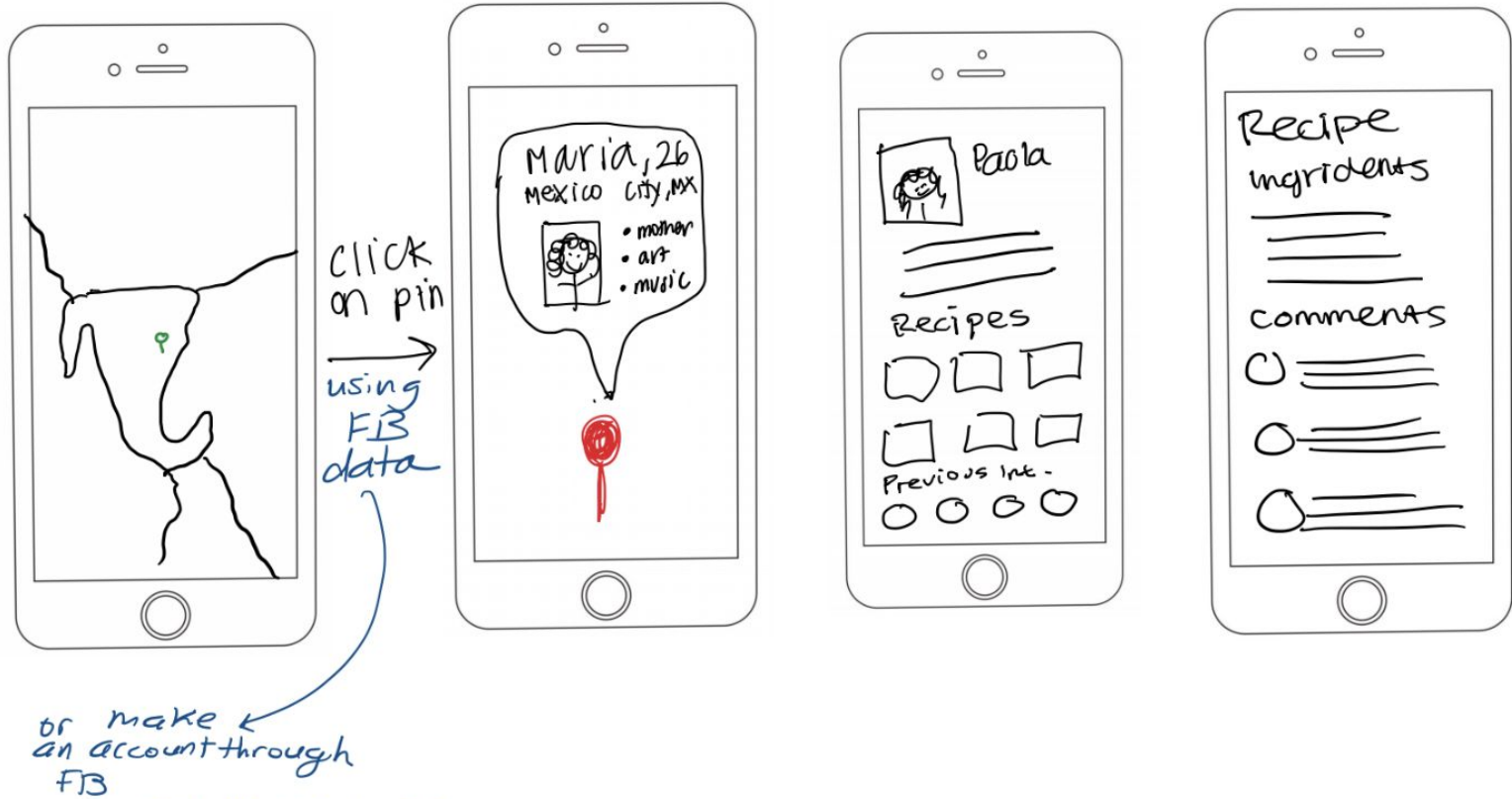
Mission Statement

Travel through your kitchen.

Bring authentic cultural experiences to all people regardless of travel constraints.

Selected Interface Design

Map Design

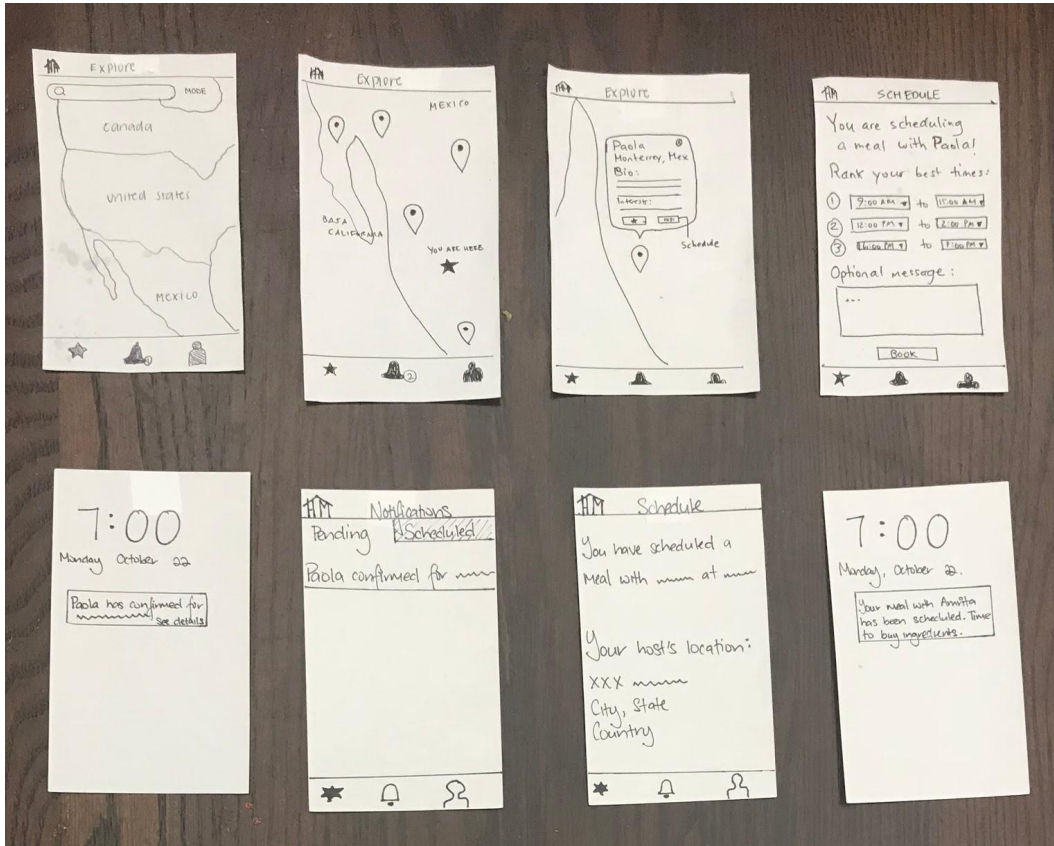




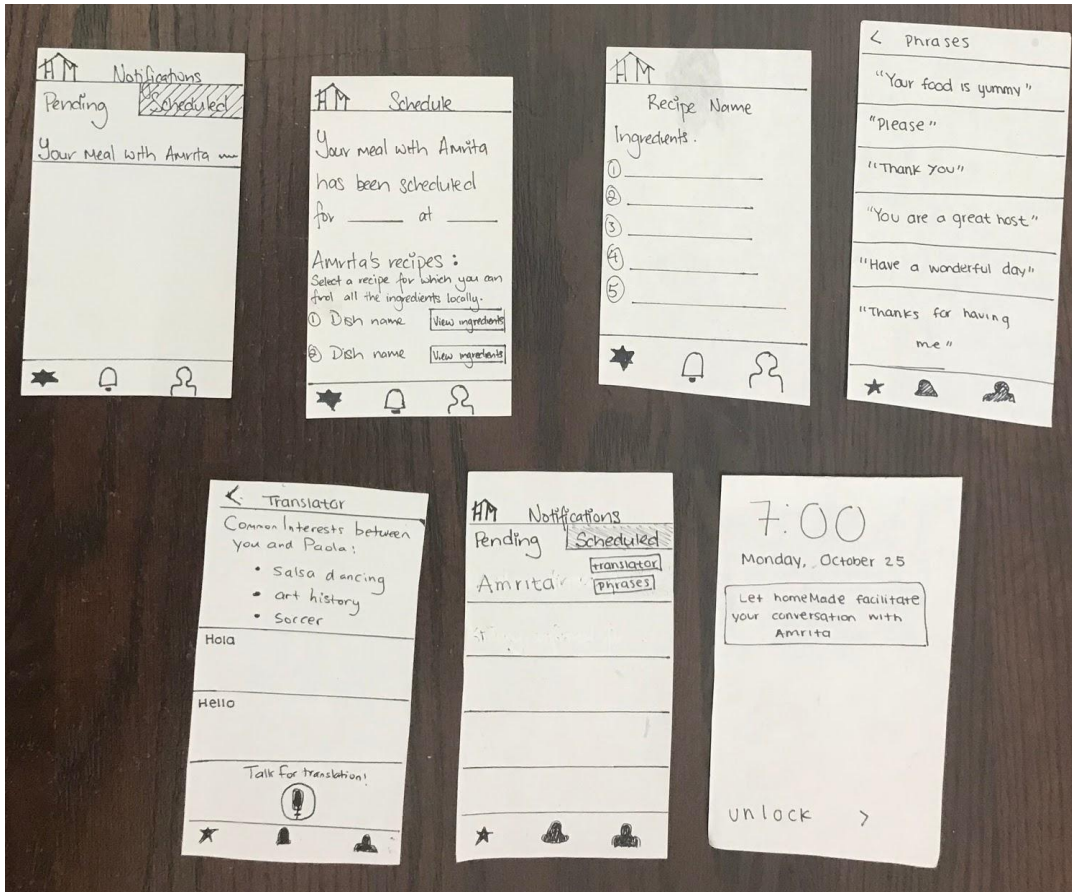
Rationale

- Emphasizes geographic location
- Map visual emphasizes “travel”
- Familiarity : UI of the map view is similar to existing apps
- Easy for users to answer question: “where do I want to travel?”

Low-fi Prototype



Visual emphasis of travel



Simulate mobile interactions



Task Flows

Screen when user opens app – map view



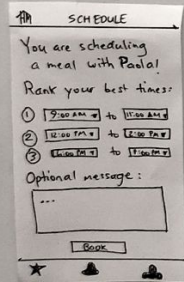
Zoom in slightly closer on the map – see pins of users to connect with



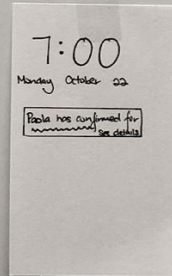
Click on pin to see name, location, and bio/interests of user. Can save for later or send meal request



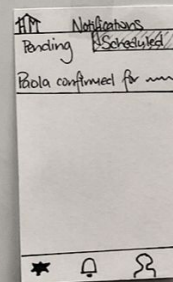
Scheduling screen



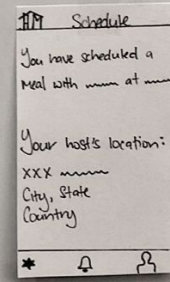
Push notification when request is confirmed or denied

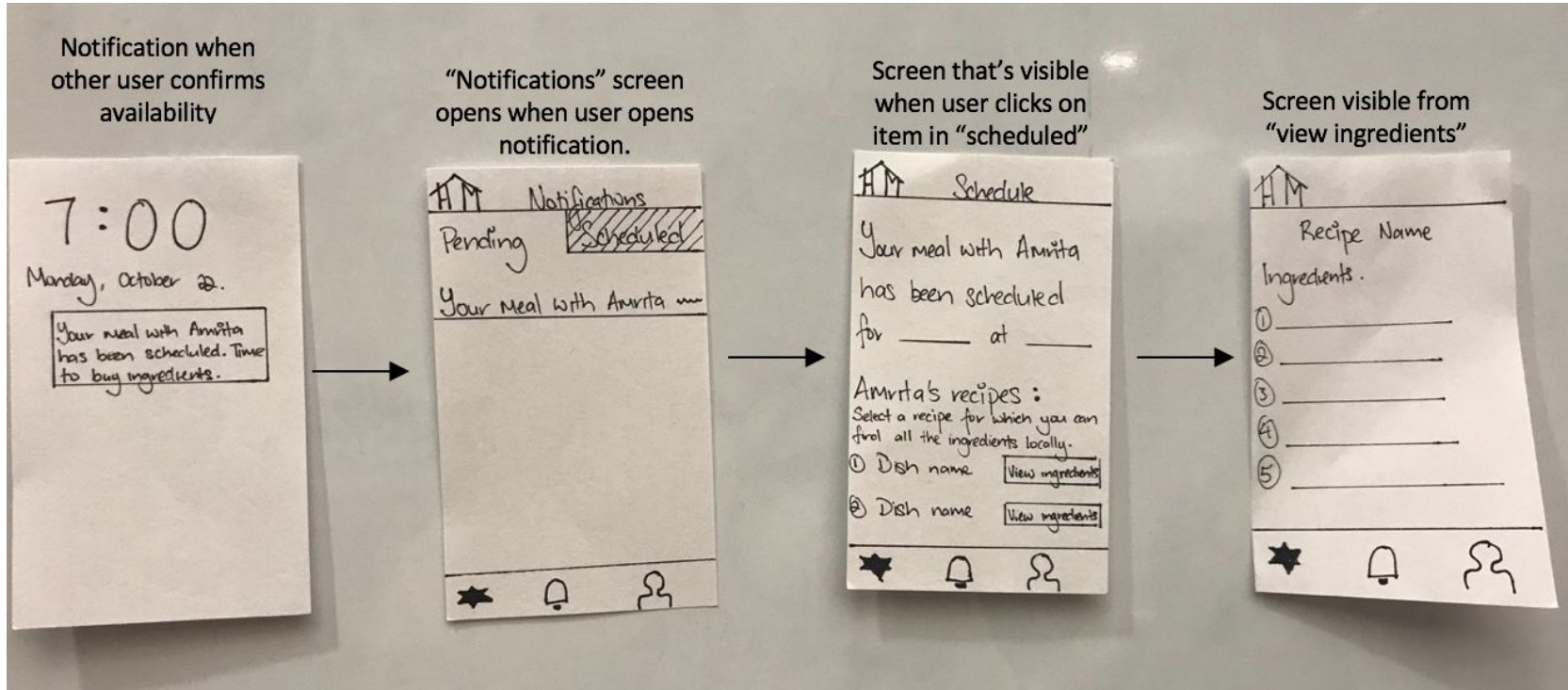


Also receive notification in the app notifications tab

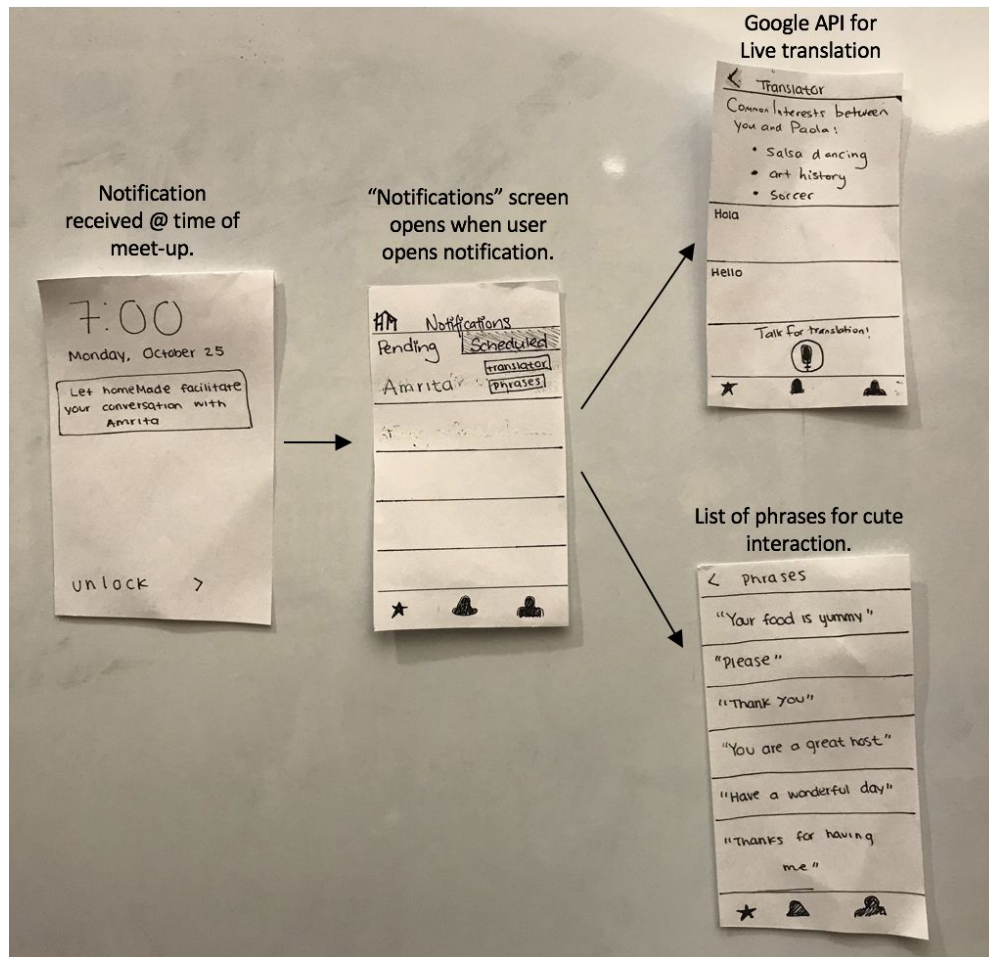


Information about meeting/meal





Task 2: Get groceries to share a meal (host)





Usability Testing

Usability Testing: Method

3 volunteer participants: no compensation.



Usability Testing: Results

- Users had difficulty understanding our complex process without instructions.
- Users did not know what to do with the information presented (buy ingredients).
- Notification messages were not clear.



Survey Ratings

On a scale from 1-10, how likely or unlikely would you be to use the finished product?

1 2 3 4 5 6 7 8 9 10

On a scale from 1-10, how likely or unlikely would you be to recommend the product to a friend?

1 2 3 4 5 6 7 8 9 10

On a scale from 1-10, how likely or unlikely would you be to use the finished product?

1 2 3 4 5 6 7 8 9 10

On a scale from 1-10, how likely or unlikely would you be to recommend the product to a friend?

1 2 3 4 5 6 7 8 9 10

On a scale from 1-10, how likely or unlikely would you be to use the finished product?

1 2 3 4 5 6 7 8 9 10

On a scale from 1-10, how likely or unlikely would you be to recommend the product to a friend?

1 2 3 4 5 6 7 8 9 10

Suggested UI Changes

1. Improve discoverability of search bar with text: : “Search”
2. New favourites icon; currently used for two features.
3. Let users “request” meal to signify confirmation pending; instead of “book”.
4. Ability to print or export ingredients list.
5. Move common interest to a new screen; currently paired with translator.



Questions?

