

**dot** Train  
*Travel Together.*



**Scott A:**  
*User Testing*



**Christian M:**  
*Development*



**Adrian H:**  
*Design*



**Ashwin K:**  
*Team Manager*

# Where We're Going

Problem Definition

Value Proposition

Tasks

Revised Interface

Prototype Overview

# Where We're Going

Problem Definition

Value Proposition

Tasks

Revised Interface

Prototype Overview

# Where We're Going

Problem Definition

Value Proposition

Tasks

Revised Interface

Prototype Overview

# Where We're Going

Problem Definition

Value Proposition

Tasks

Revised Interface

Prototype Overview

# Where We're Going

Problem Definition

Value Proposition

Tasks

Revised Interface

Prototype Overview

# Problem Definition

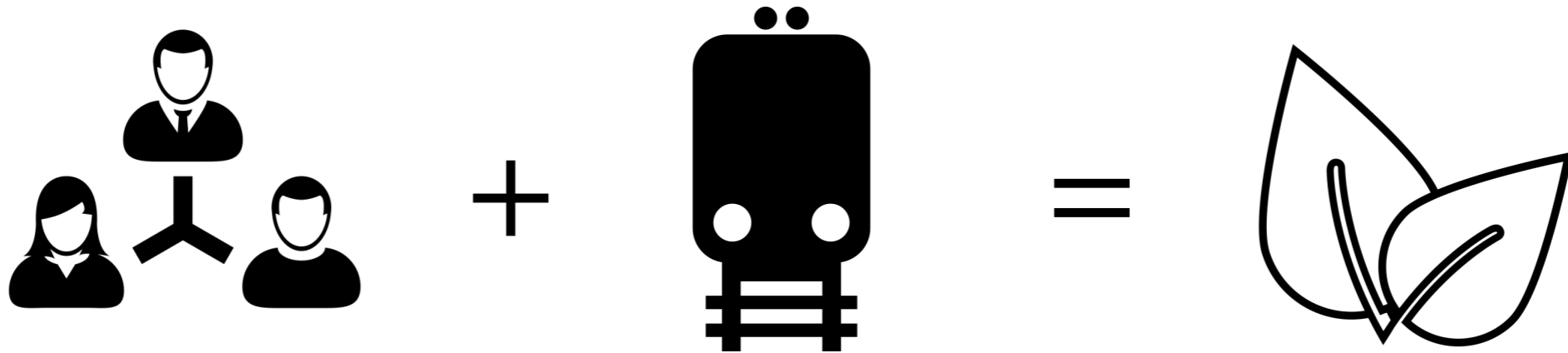
105 million US drivers 

= 7000lbs CO<sub>2</sub>/year 

= 260hrs/year 

# Value Proposition

“Travel together”





# Tasks

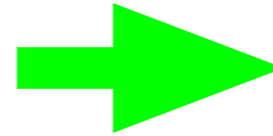
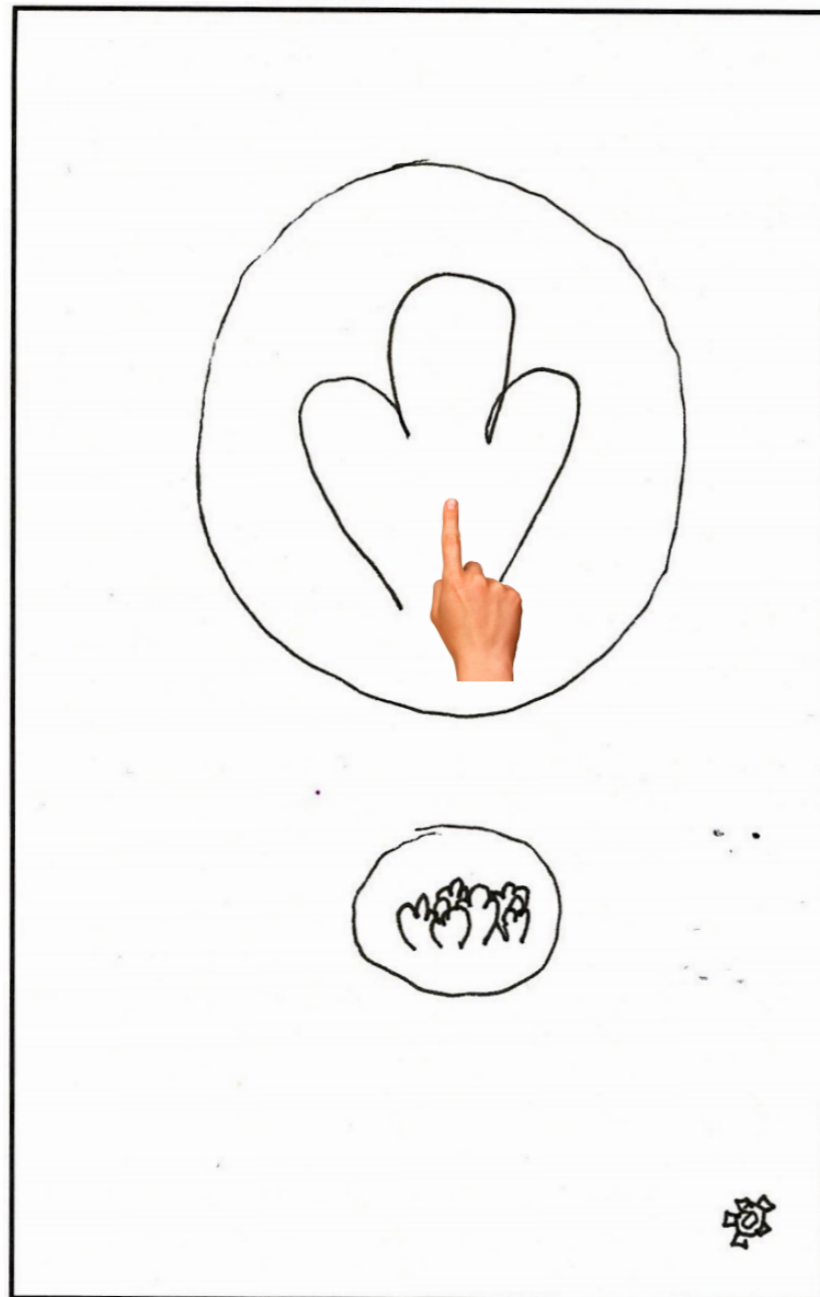
complex ● Playing a Game

moderate ● Find a Match

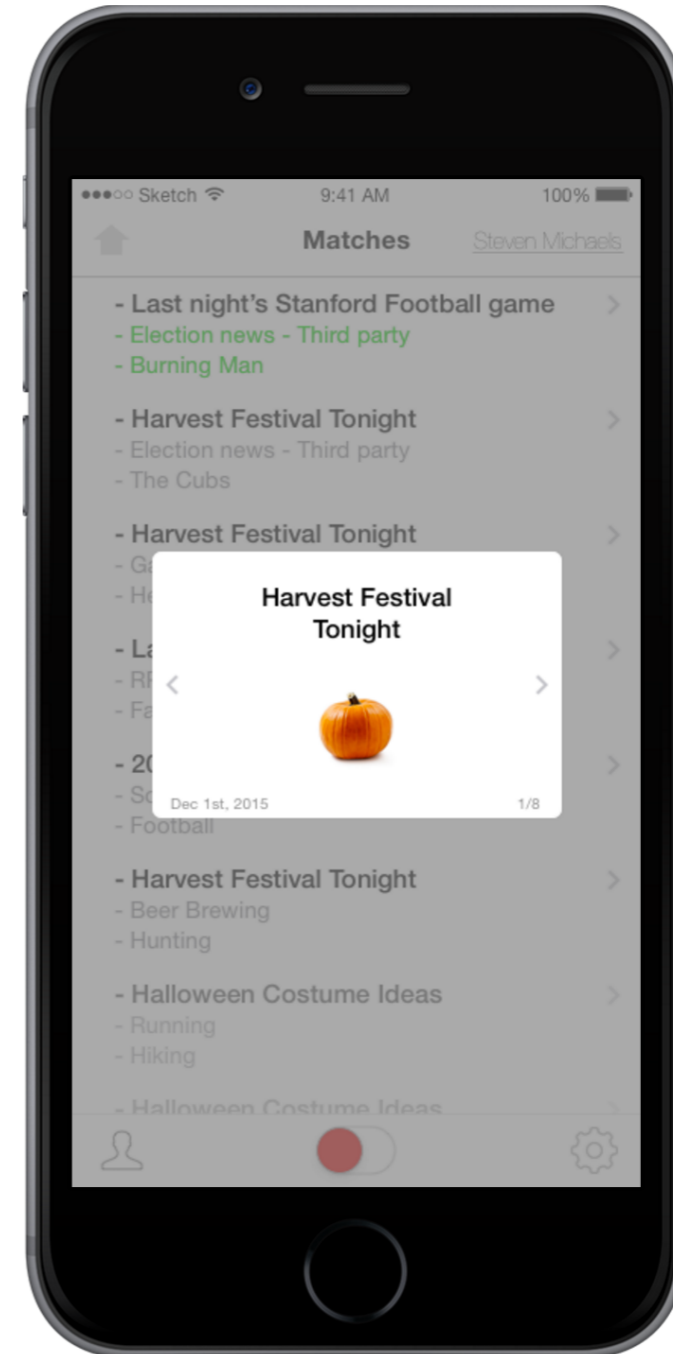
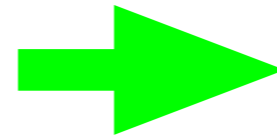
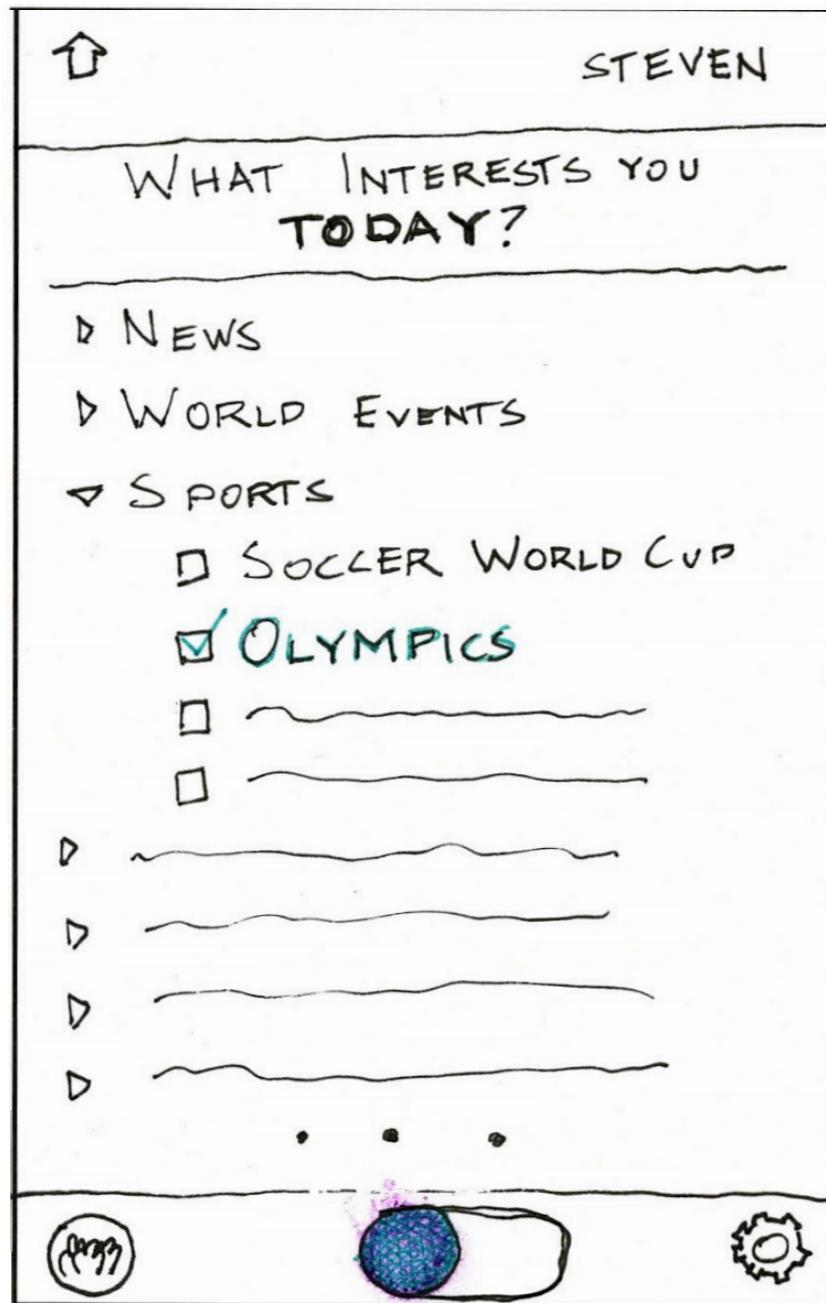
simple ● Become Available



# Revised Interface #1

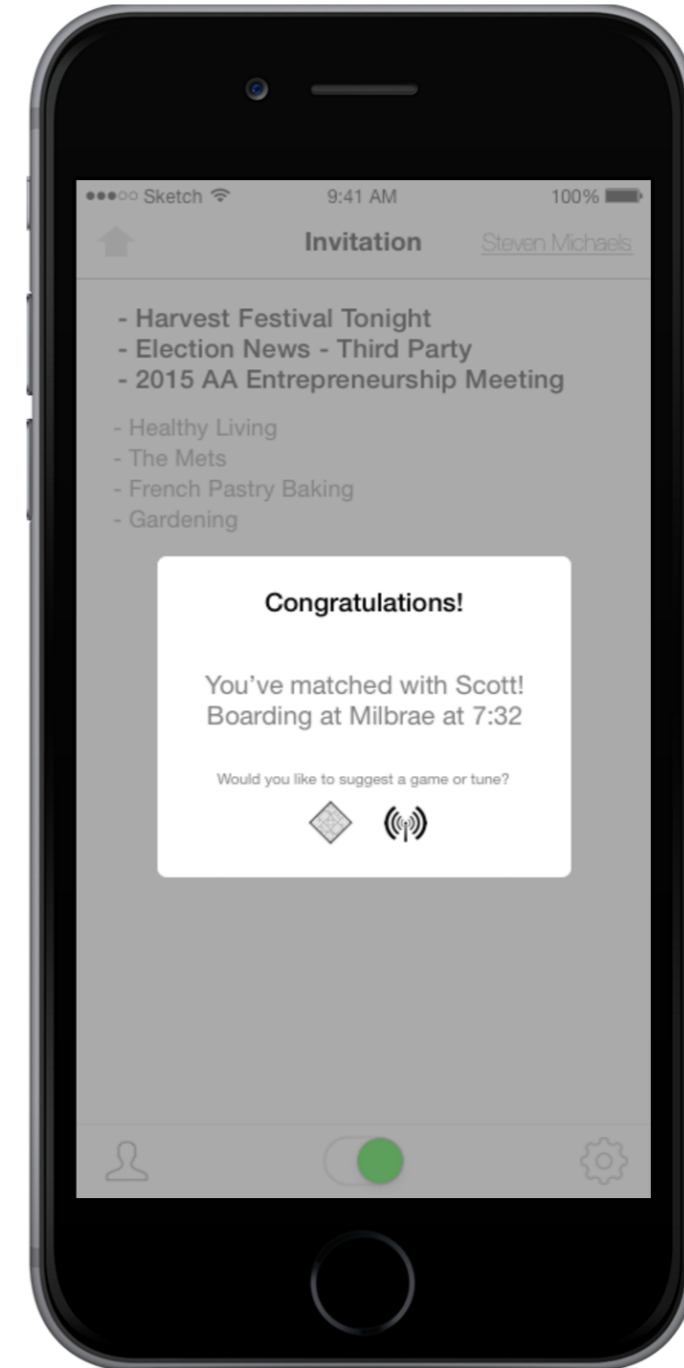
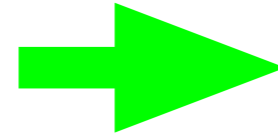


# Revised Interface #2

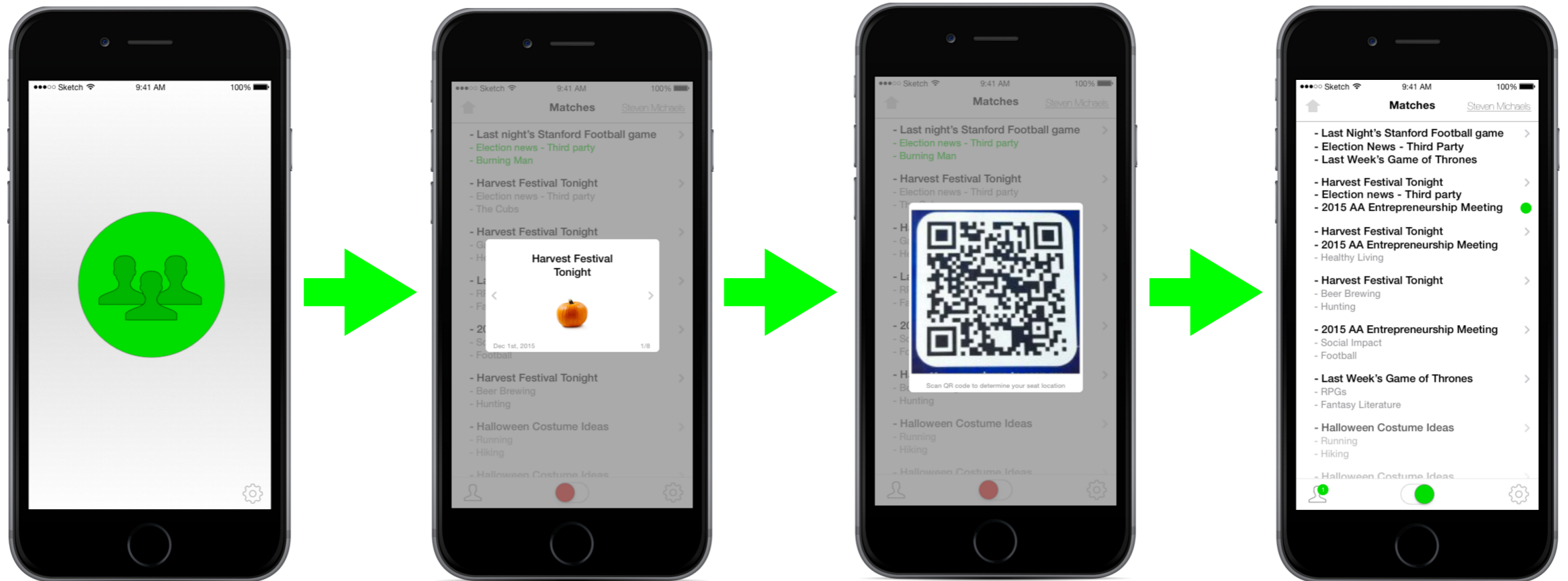


# Revised Interface #3

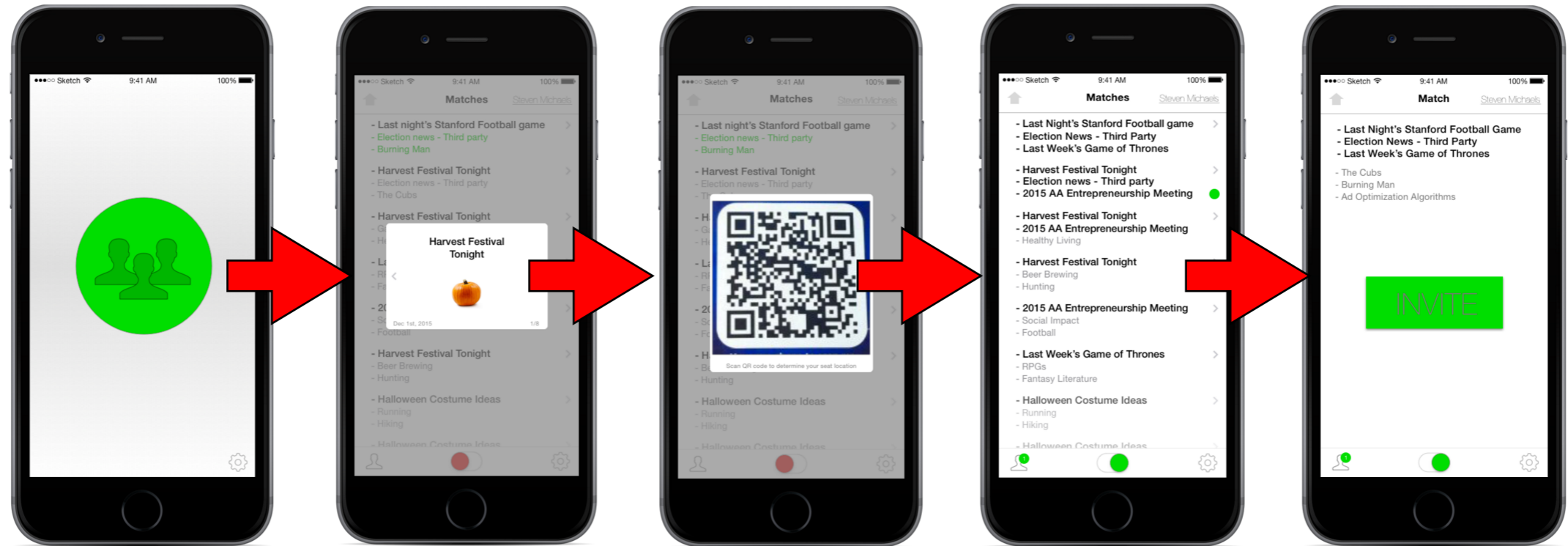
Congratulations!  
You have matched with  
JOHN  
BOARDING :  
HILLSDALE STATION  
7:20 AM



# Task 1: Become Available



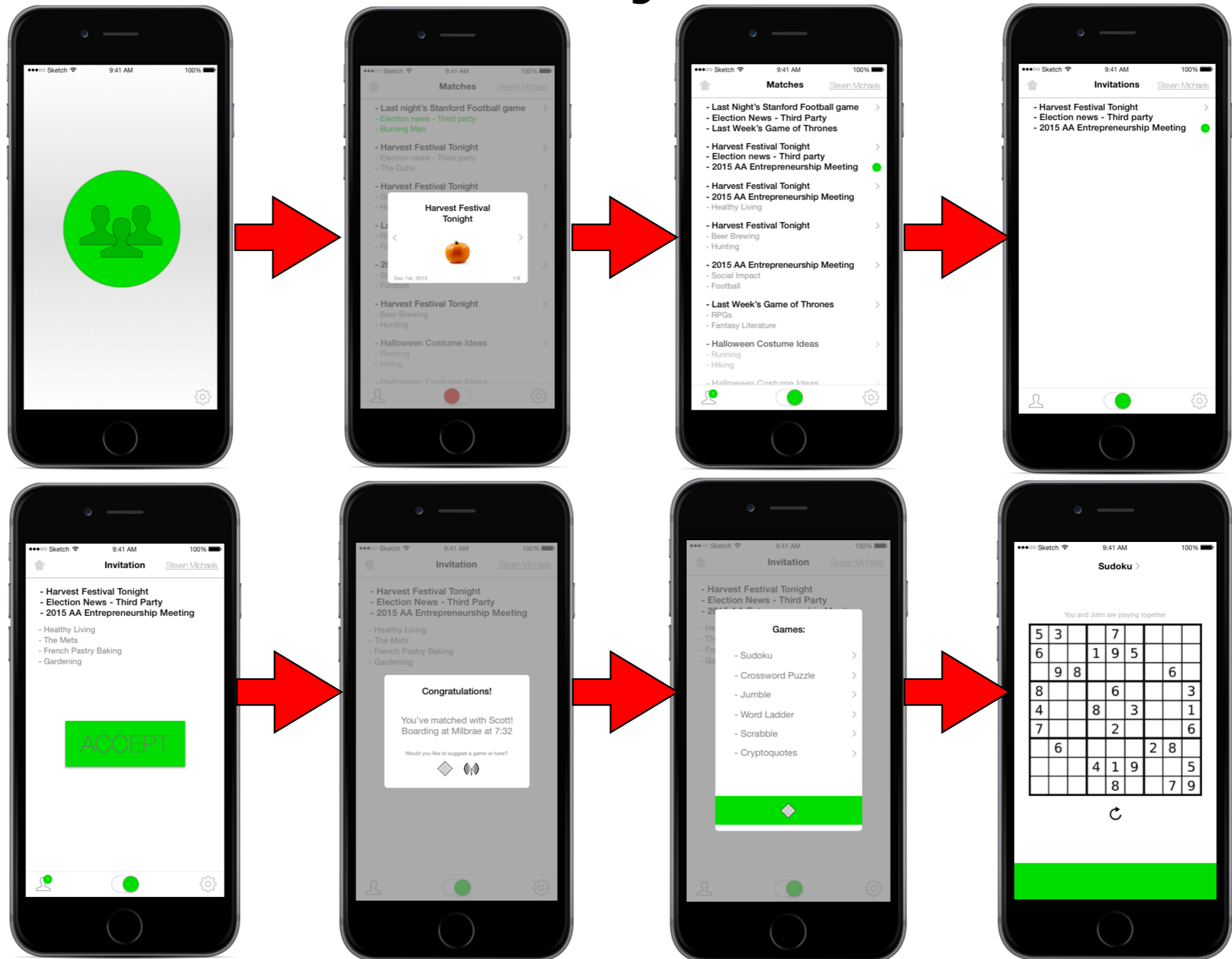
# Task 2: Find a Match



# Task 2: Find a Match



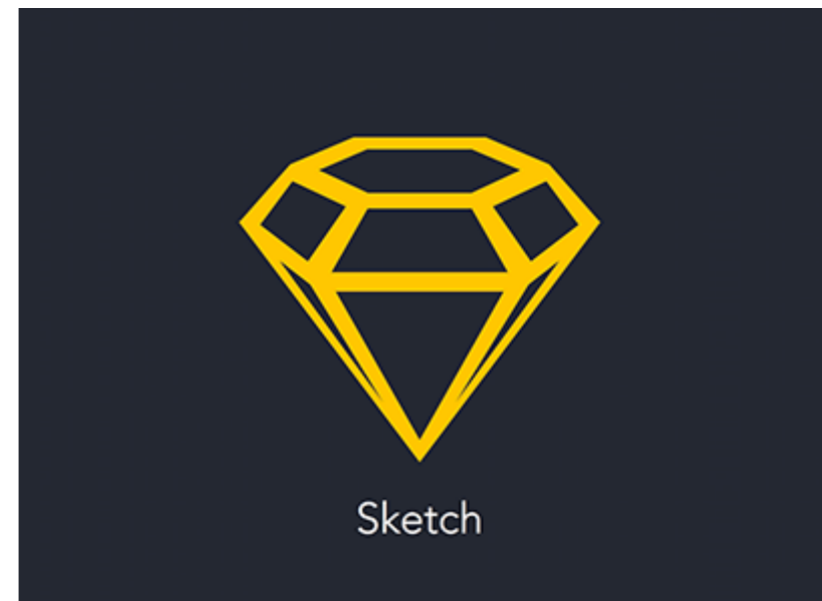
# Task 3: Play a Game



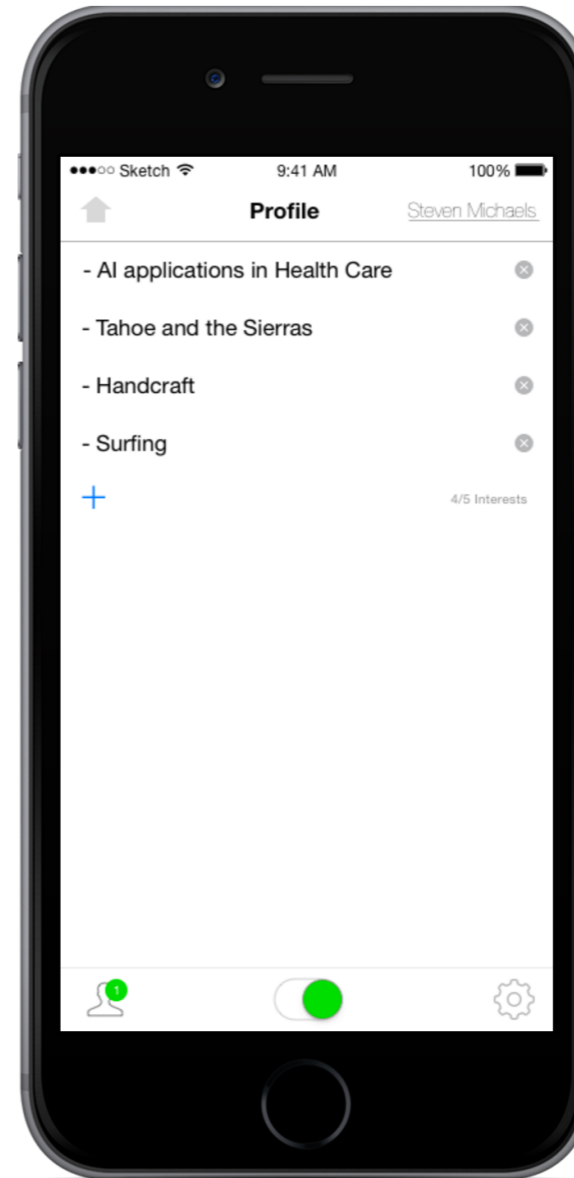
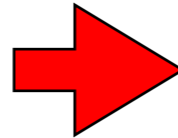
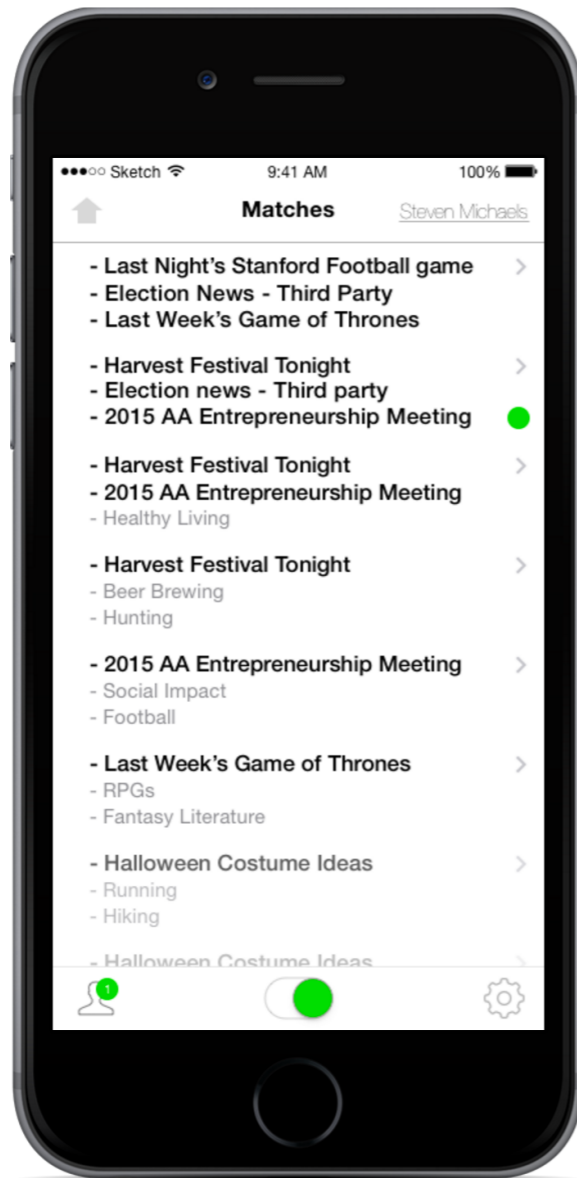


# Prototyping Overview

Tools Used:



# Extra



# Links

Interactive Prototype: <https://marvelapp.com/120bjch#8508639>

Website: <http://web.stanford.edu/class/cs147/projects/sustainability/Masa/dotTrainSite/>